

Product datasheet for **TA810315**

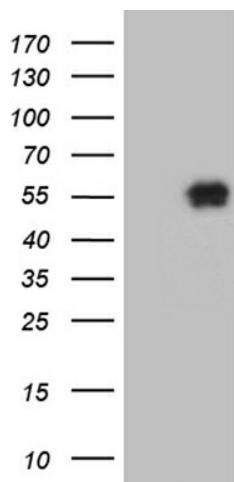
KLF12 Mouse Monoclonal Antibody [Clone ID: OTI3D4]

Product data:

Product Type:	Primary Antibodies
Clone Name:	OTI3D4
Applications:	WB
Recommended Dilution:	WB 1:2000
Reactivity:	Human, Mouse, Rat
Host:	Mouse
Isotype:	IgG1
Clonality:	Monoclonal
Immunogen:	Full length human recombinant protein of human KLF12 (NP_009180) produced in E.coli.
Formulation:	PBS (PH 7.3) containing 1% BSA, 50% glycerol and 0.02% sodium azide.
Concentration:	1 mg/ml
Purification:	Purified from mouse ascites fluids or tissue culture supernatant by affinity chromatography (protein A/G)
Conjugation:	Unconjugated
Storage:	Store at -20°C as received.
Stability:	Stable for 12 months from date of receipt.
Predicted Protein Size:	44.1 kDa
Gene Name:	Kruppel-like factor 12
Database Link:	NP_009180 Entrez Gene 16597 Mouse Entrez Gene 306110 Rat Entrez Gene 11278 Human Q9Y4X4
Synonyms:	AP-2rep; AP2REP; HSPC122
Protein Families:	Transcription Factors



[View online »](#)

Product images:

HEK293T cells were transfected with the pCMV6-ENTRY control (Left lane) or pCMV6-ENTRY KLF12 ([RC205126], Right lane) cDNA for 48 hrs and lysed. Equivalent amounts of cell lysates (5 ug per lane) were separated by SDS-PAGE and immunoblotted with anti-KLF12 (1:2000). Positive lysates [LY402120] (100ug) and [LC402120] (20ug) can be purchased separately from OriGene.