

## Product datasheet for **TA810311AM**

### PKI alpha (PKIA) Mouse Monoclonal Antibody (Biotin conjugated) [Clone ID: OTI1G5]

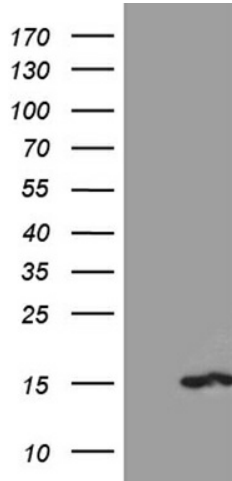
#### Product data:

Product Type:	Primary Antibodies
Clone Name:	OTI1G5
Applications:	WB
Recommended Dilution:	WB 1:2000
Reactivity:	Human, Mouse, Rat
Host:	Mouse
Isotype:	IgG1
Clonality:	Monoclonal
Immunogen:	Full length human recombinant protein of human PKIA (NP_862822) produced in E.coli.
Formulation:	PBS (pH 7.3) containing 1% BSA, 50% glycerol and 0.02% sodium azide.
Concentration:	0.5 mg/ml
Purification:	Purified from mouse ascites fluids or tissue culture supernatant by affinity chromatography (protein A/G)
Conjugation:	Biotin
Storage:	Store at -20°C as received.
Stability:	Stable for 12 months from date of receipt.
Predicted Protein Size:	7.8 kDa
Gene Name:	protein kinase (cAMP-dependent, catalytic) inhibitor alpha
Database Link:	<a href="#">NP_862822</a> <a href="#">Entrez Gene 18767 Mouse</a> <a href="#">Entrez Gene 114906 Rat</a> <a href="#">Entrez Gene 5569 Human</a> <a href="#">P61925</a>
Synonyms:	PRKACN1
Protein Families:	Druggable Genome



[View online »](#)

## Product images:



HEK293T cells were transfected with the pCMV6-ENTRY control (Cat# [PS100001], Left lane) or pCMV6-ENTRY PKIA (Cat# [RC204652], Right lane) cDNA for 48 hrs and lysed. Equivalent amounts of cell lysates (5 ug per lane) were separated by SDS-PAGE and immunoblotted with anti-PKIA (Cat# [TA810311])(1:2000). Positive lysates [LY430578] (100ug) and [LC430578] (20ug) can be purchased separately from OriGene.