

## Product datasheet for **TA810309M**

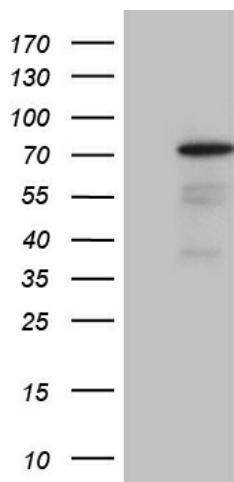
### **PGBD3 Mouse Monoclonal Antibody [Clone ID: OTI1B3]**

#### **Product data:**

Product Type:	Primary Antibodies
Clone Name:	OTI1B3
Applications:	WB
Recommended Dilution:	WB 1:2000
Reactivity:	Human
Host:	Mouse
Isotype:	IgG1
Clonality:	Monoclonal
Immunogen:	Human recombinant protein fragment corresponding to amino acids 313-593 of human PGBD3 (NP_736609) produced in E.coli.
Formulation:	PBS (pH 7.3) containing 1% BSA, 50% glycerol and 0.02% sodium azide.
Concentration:	1 mg/ml
Purification:	Purified from mouse ascites fluids or tissue culture supernatant by affinity chromatography (protein A/G)
Conjugation:	Unconjugated
Storage:	Store at -20°C as received.
Stability:	Stable for 12 months from date of receipt.
Predicted Protein Size:	67.4 kDa
Gene Name:	piggyBac transposable element derived 3
Database Link:	<a href="#">NP_736609</a> <a href="#">Entrez Gene 267004 Human</a> <a href="#">Q8N328</a>
Synonyms:	FLJ90201

[View online »](#)

## Product images:



HEK293T cells were transfected with the pCMV6-ENTRY control (Left lane) or pCMV6-ENTRY PGBD3 [RC208977], Right lane) cDNA for 48 hrs and lysed. Equivalent amounts of cell lysates (5 ug per lane) were separated by SDS-PAGE and immunoblotted with anti-PGBD3 (1:2000). Positive lysates [LY406870] (100ug) and [LC406870] (20ug) can be purchased separately from OriGene.