

## Product datasheet for **TA810299S**

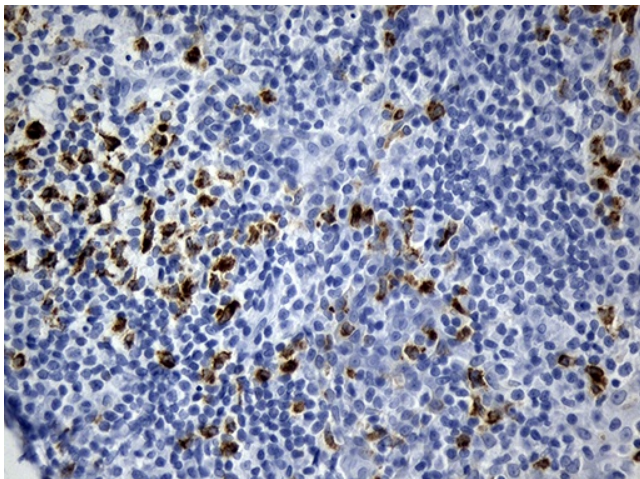
### CTLA4 Mouse Monoclonal Antibody [Clone ID: OTI1G10]

#### Product data:

Product Type:	Primary Antibodies
Clone Name:	OTI1G10
Applications:	IHC
Recommended Dilution:	IHC 1:500
Reactivity:	Human
Host:	Mouse
Isotype:	IgG1
Clonality:	Monoclonal
Immunogen:	Full length human recombinant protein of human CTLA4 (NP_001032720) produced in HEK293T cell.
Formulation:	PBS (pH 7.3) containing 1% BSA, 50% glycerol and 0.02% sodium azide.
Concentration:	1 mg/ml
Purification:	Purified from mouse ascites fluids or tissue culture supernatant by affinity chromatography (protein A/G)
Conjugation:	Unconjugated
Storage:	Store at -20°C as received.
Stability:	Stable for 12 months from date of receipt.
Predicted Protein Size:	19.15 kDa
Gene Name:	cytotoxic T-lymphocyte associated protein 4
Database Link:	<a href="#">NP_001032720</a> <a href="#">Entrez Gene 1493 Human</a> <a href="#">P16410</a>
Synonyms:	ALPS5; CD; CD152; CELIAC3; CTLA-4; GRD4; GSE; IDDM12
Protein Families:	Druggable Genome, Transmembrane
Protein Pathways:	Autoimmune thyroid disease, Cell adhesion molecules (CAMs), T cell receptor signaling pathway



[View online »](#)

**Product images:**

Immunohistochemical staining of paraffin-embedded Human tonsil within the normal limits using anti-CTLA4 mouse monoclonal antibody. (Heat-induced epitope retrieval by 1mM EDTA in 10mM Tris buffer (pH8.5) at 120°C for 3min, [TA810299]) (1:500)