

Product datasheet for **TA810295**

p114RhoGEF (ARHGEF18) Mouse Monoclonal Antibody [Clone ID: OTI6G8]

Product data:

Product Type:	Primary Antibodies
Clone Name:	OTI6G8
Applications:	WB
Recommended Dilution:	WB 1:500~2000
Reactivity:	Human
Host:	Mouse
Isotype:	IgG1
Clonality:	Monoclonal
Immunogen:	Human recombinant protein fragment corresponding to amino acids 118-215 of human ARHGEF18 (NP_001124427) produced in E.coli.
Formulation:	PBS (pH 7.3) containing 1% BSA, 50% glycerol and 0.02% sodium azide.
Concentration:	1 mg/ml
Purification:	Purified from mouse ascites fluids or tissue culture supernatant by affinity chromatography (protein A/G)
Conjugation:	Unconjugated
Storage:	Store at -20°C as received.
Stability:	Stable for 12 months from date of receipt.
Predicted Protein Size:	130.6 kDa
Gene Name:	Rho/Rac guanine nucleotide exchange factor 18
Database Link:	NP_001124427 Entrez Gene 23370 Human Q6ZSZ5



[View online »](#)

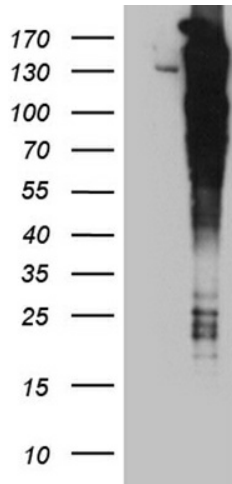
Background:

Rho GTPases are GTP binding proteins that regulate a wide spectrum of cellular functions. These cellular processes include cytoskeletal rearrangements, gene transcription, cell growth and motility. Activation of Rho GTPases is under the direct control of guanine nucleotide exchange factors (GEFs). The protein encoded by this gene is a guanine nucleotide exchange factor and belongs to the Rho GTPase GFE family. Family members share a common feature, a Dbl (DH) homology domain followed by a pleckstrin (PH) homology domain. Alternatively spliced transcript variants encoding different isoforms have been identified. [provided by RefSeq, Oct 2008]

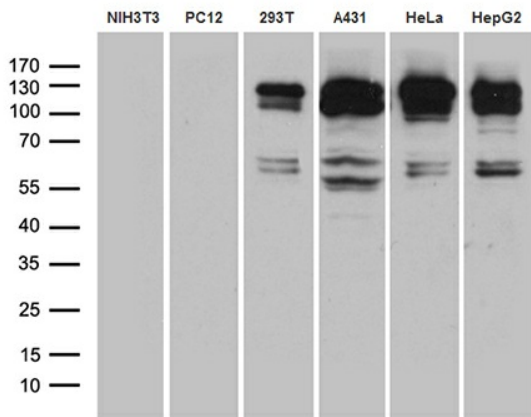
Synonyms:

P114-RhoGEF

Product images:



HEK293T cells were transfected with the pCMV6-ENTRY control (Left lane) or pCMV6-ENTRY ARHGEF18 ([RC226350], Right lane) cDNA for 48 hrs and lysed. Equivalent amounts of cell lysates (5 ug per lane) were separated by SDS-PAGE and immunoblotted with anti-ARH. Positive lysates [LY427320] (100ug) and [LC427320] (20ug) can be purchased separately from OriGene.



Western blot analysis of extracts (35ug) from 6 cell lines by using anti-ARHGEF18 monoclonal antibody (1:500).