

Product datasheet for **TA810292BM**

SLC2A4RG Mouse Monoclonal Antibody (HRP conjugated) [Clone ID: OTI4B6]

Product data:

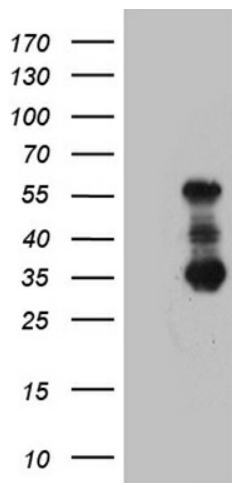
Product Type:	Primary Antibodies
Clone Name:	OTI4B6
Applications:	WB
Recommended Dilution:	WB 1:2000
Reactivity:	Human
Host:	Mouse
Isotype:	IgG2b
Clonality:	Monoclonal
Immunogen:	Human recombinant protein fragment corresponding to amino acids 1-259 of human SLC2A4RG (NP_064446) produced in E.coli.
Formulation:	PBS (pH 7.3) containing 1% BSA, 50% glycerol.
Concentration:	0.5 mg/ml
Purification:	Purified from mouse ascites fluids or tissue culture supernatant by affinity chromatography (protein A/G)
Conjugation:	HRP
Storage:	Store at -20°C as received.
Stability:	Stable for 12 months from date of receipt.
Predicted Protein Size:	41.1 kDa
Gene Name:	SLC2A4 regulator
Database Link:	NP_064446 Entrez Gene 56731 Human Q9NR83
Background:	The protein encoded by this gene is a nuclear transcription factor involved in the activation of the solute carrier family 2 member 4 gene. The encoded protein interacts with another transcription factor, myocyte enhancer factor 2, to activate transcription of this gene. [provided by RefSeq, Jul 2008]
Synonyms:	GEF; HDBP-1; HDBP1; Si-1-2; Si-1-2-19



[View online »](#)

Protein Families: Transcription Factors

Product images:



HEK293T cells were transfected with the pCMV6-ENTRY control (Left lane) or pCMV6-ENTRY SLC2A4RG ([RC208570], Right lane) cDNA for 48 hrs and lysed. Equivalent amounts of cell lysates (5 ug per lane) were separated by SDS-PAGE and immunoblotted with anti-SLC. Positive lysates [LY412651] (100ug) and [LC412651] (20ug) can be purchased separately from OriGene.