

## Product datasheet for **TA810291M**

### SLC2A4RG Mouse Monoclonal Antibody [Clone ID: OTI4B3]

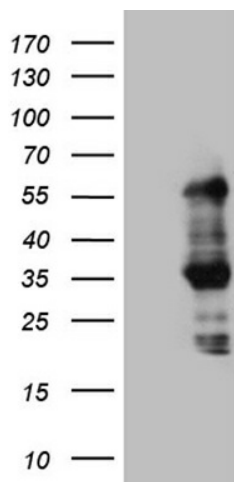
#### Product data:

Product Type:	Primary Antibodies
Clone Name:	OTI4B3
Applications:	WB
Recommended Dilution:	WB 1:2000
Reactivity:	Human
Host:	Mouse
Isotype:	IgG1
Clonality:	Monoclonal
Immunogen:	Human recombinant protein fragment corresponding to amino acids 1-259 of human SLC2A4RG (NP_064446) produced in E.coli.
Formulation:	PBS (pH 7.3) containing 1% BSA, 50% glycerol and 0.02% sodium azide.
Concentration:	1 mg/ml
Purification:	Purified from mouse ascites fluids or tissue culture supernatant by affinity chromatography (protein A/G)
Conjugation:	Unconjugated
Storage:	Store at -20°C as received.
Stability:	Stable for 12 months from date of receipt.
Predicted Protein Size:	41.1 kDa
Gene Name:	SLC2A4 regulator
Database Link:	<a href="#">NP_064446</a> <a href="#">Entrez Gene 56731 Human</a> <a href="#">Q9NR83</a>
Synonyms:	GEF; HDBP-1; HDBP1; Si-1-2; Si-1-2-19
Protein Families:	Transcription Factors



[View online »](#)

## Product images:



HEK293T cells were transfected with the pCMV6-ENTRY control (Left lane) or pCMV6-ENTRY SLC2A4RG ([RC208570], Right lane) cDNA for 48 hrs and lysed. Equivalent amounts of cell lysates (5 ug per lane) were separated by SDS-PAGE and immunoblotted with anti-SLC2A4RG (1:2000). Positive lysates [LY412651] (100ug) and [LC412651] (20ug) can be purchased separately from OriGene.