

## Product datasheet for **TA810288BM**

### **KPC2 (UBAC1) Mouse Monoclonal Antibody (HRP conjugated) [Clone ID: OTI6E9]**

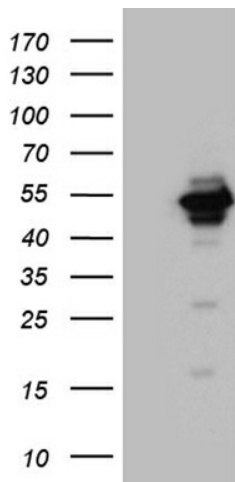
#### **Product data:**

Product Type:	Primary Antibodies
Clone Name:	OTI6E9
Applications:	WB
Recommended Dilution:	WB 1:500~2000
Reactivity:	Human, Mouse, Rat
Host:	Mouse
Isotype:	IgG2b
Clonality:	Monoclonal
Immunogen:	Full length human recombinant protein of human UBAC1 (NP_057256) produced in 293T.
Formulation:	PBS (pH 7.3) containing 1% BSA, 50% glycerol.
Concentration:	0.5 mg/ml
Purification:	Purified from mouse ascites fluids or tissue culture supernatant by affinity chromatography (protein A/G)
Conjugation:	HRP
Storage:	Store at -20°C as received.
Stability:	Stable for 12 months from date of receipt.
Gene Name:	UBA domain containing 1
Database Link:	<a href="#">NP_057256</a> <a href="#">Entrez Gene 98766 Mouse</a> <a href="#">Entrez Gene 362087 Rat</a> <a href="#">Entrez Gene 10422 Human</a> <a href="#">Q9BSL1</a>
Synonyms:	GBDR1; KPC2; UBADC1
Protein Families:	Druggable Genome

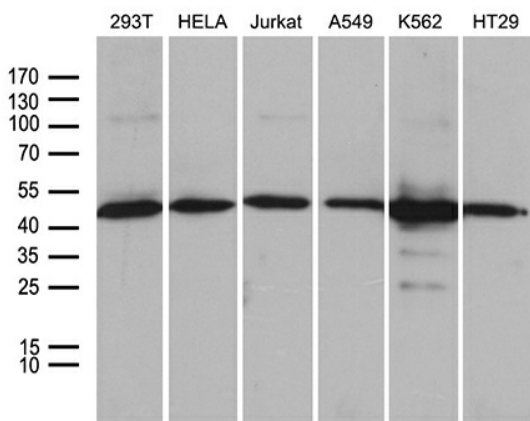


[View online »](#)

**Product images:**



HEK293T cells were transfected with the pCMV6-ENTRY control (Cat# [PS100001], Left lane) or pCMV6-ENTRY UBAC1 (Cat# [RC200734], Right lane) cDNA for 48 hrs and lysed. Equivalent amounts of cell lysates (5 ug per lane) were separated by SDS-PAGE and immunoblotted with anti-UBAC1 (Cat# [TA810288])(1:2000). Positive lysates [LY414142] (100ug) and [LC414142] (20ug) can be purchased separately from OriGene.



Western blot analysis of extracts (35ug) from 6 different cell lines by using anti-UBAC1 monoclonal antibody (1:500).