

Product datasheet for **TA810277**

DHRS4L2 Mouse Monoclonal Antibody [Clone ID: OTI4A10]

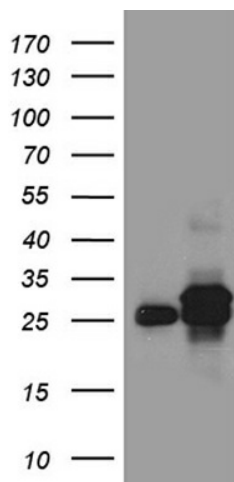
Product data:

Product Type:	Primary Antibodies
Clone Name:	OTI4A10
Applications:	IHC, WB
Recommended Dilution:	WB 1:500~2000, IHC 1:250
Reactivity:	Human, Mouse
Host:	Mouse
Isotype:	IgG2a
Clonality:	Monoclonal
Immunogen:	Full length human recombinant protein of human DHRS4L2 (NP_932349) produced in E.coli.
Formulation:	PBS (pH 7.3) containing 1% BSA, 50% glycerol and 0.02% sodium azide.
Concentration:	1 mg/ml
Purification:	Purified from mouse ascites fluids or tissue culture supernatant by affinity chromatography (protein A/G)
Conjugation:	Unconjugated
Storage:	Store at -20°C as received.
Stability:	Stable for 12 months from date of receipt.
Gene Name:	dehydrogenase/reductase 4 like 2
Database Link:	NP_932349 Entrez Gene 317749 Human Q6PKH6
Synonyms:	SDR25C3
Protein Families:	Druggable Genome
Protein Pathways:	Metabolic pathways, Retinol metabolism

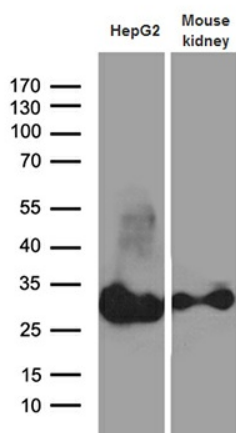


[View online »](#)

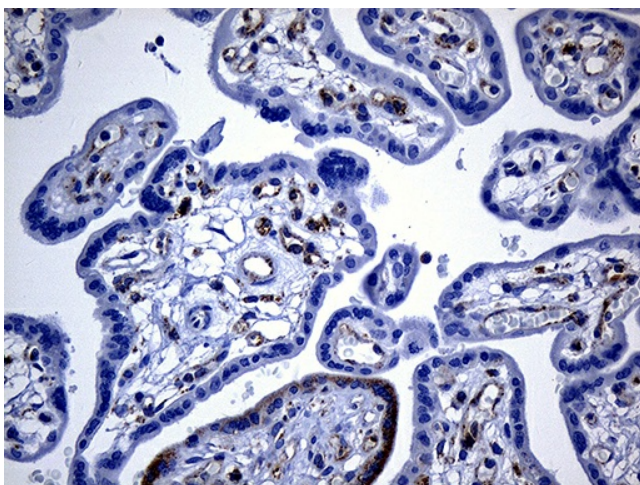
Product images:



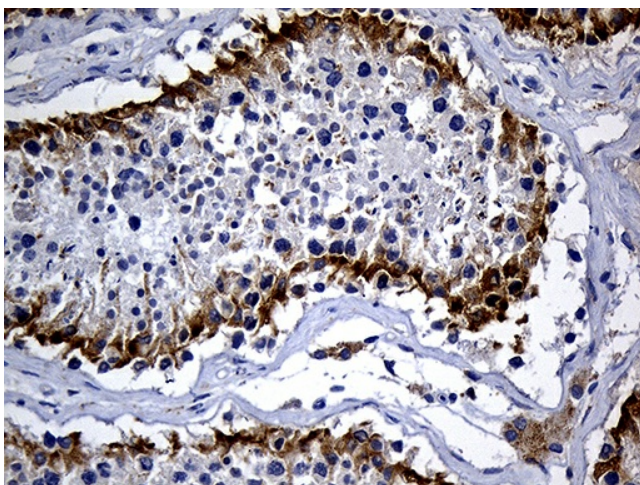
HEK293T cells were transfected with the pCMV6-ENTRY control (Left lane) or pCMV6-ENTRY DHRS4L2 ([RC215019], Right lane) cDNA for 48 hrs and lysed. Equivalent amounts of cell lysates (5 ug per lane) were separated by SDS-PAGE and immunoblotted with anti-DHRS4L2 (1:2000).



Western blot analysis of extracts (35ug) from Hepg2 cell line and mouse kidney tissue lysate by using anti-DHRS4L2 monoclonal antibody (1:500).



Immunohistochemical staining of paraffin-embedded Human placenta tissue within the normal limits using anti-DHRS4L2 mouse monoclonal antibody. (Heat-induced epitope retrieval by 1mM EDTA in 10mM Tris buffer (pH8.5) at 120°C for 3min, TA810277) (1:250)



Immunohistochemical staining of paraffin-embedded Human testicle tissue within the normal limits using anti-DHRS4L2 mouse monoclonal antibody. (Heat-induced epitope retrieval by 1mM EDTA in 10mM Tris buffer (pH8.5) at 120°C for 3min, TA810277) (1:250)