

## Product datasheet for **TA810275AM**

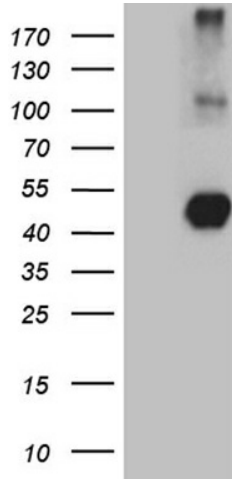
### **NEGR1 Mouse Monoclonal Antibody (Biotin conjugated) [Clone ID: OTI3G8]**

#### **Product data:**

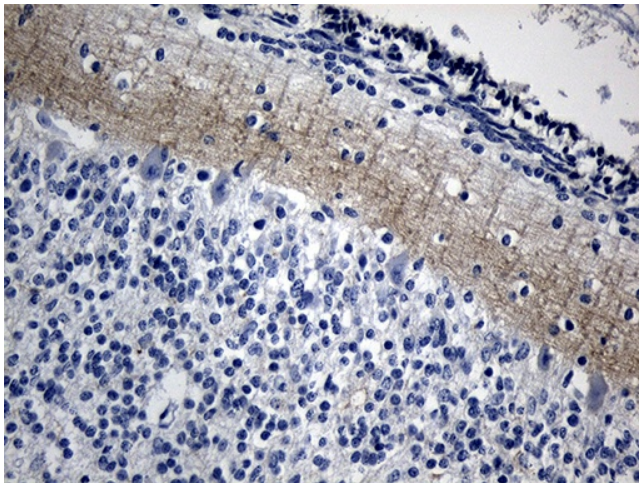
Product Type:	Primary Antibodies
Clone Name:	OTI3G8
Applications:	IHC, WB
Recommended Dilution:	WB 1:2000, IHC 1:150
Reactivity:	Human, Mouse, Rat
Host:	Mouse
Isotype:	IgG1
Clonality:	Monoclonal
Immunogen:	Human recombinant protein fragment corresponding to amino acids 80-205 of human NEGR1 (NP_776169) produced in E.coli.
Formulation:	PBS (pH 7.3) containing 1% BSA, 50% glycerol and 0.02% sodium azide.
Concentration:	0.5 mg/ml
Purification:	Purified from mouse ascites fluids or tissue culture supernatant by affinity chromatography (protein A/G)
Conjugation:	Biotin
Storage:	Store at -20°C as received.
Stability:	Stable for 12 months from date of receipt.
Gene Name:	neuronal growth regulator 1
Database Link:	<a href="#">NP_776169</a> <a href="#">Entrez Gene 59318 Rat</a> <a href="#">Entrez Gene 320840 Mouse</a> <a href="#">Entrez Gene 257194 Human</a> <a href="#">Q7Z3B1</a>
Synonyms:	DMML2433; IGLON4; KILON; Ntra
Protein Pathways:	Cell adhesion molecules (CAMs)



[View online »](#)

**Product images:**

HEK293T cells were transfected with the pCMV6-ENTRY control (Cat# [PS100001], Left lane) or pCMV6-ENTRY NEGR1 (Cat# [RC216034], Right lane) cDNA for 48 hrs and lysed. Equivalent amounts of cell lysates (5 ug per lane) were separated by SDS-PAGE and immunoblotted with anti-NEGR1 (Cat# [TA810275])(1:2000).



Immunohistochemical staining of paraffin-embedded Human embryonic cerebellum within the normal limits using anti-NEGR1 mouse monoclonal antibody. (Heat-induced epitope retrieval by 1mM EDTA in 10mM Tris buffer (pH8.5) at 120°C for 3min, [TA810275]) (1:150).