

## Product datasheet for **TA810262S**

### PTCD3 Mouse Monoclonal Antibody [Clone ID: OTI1A8]

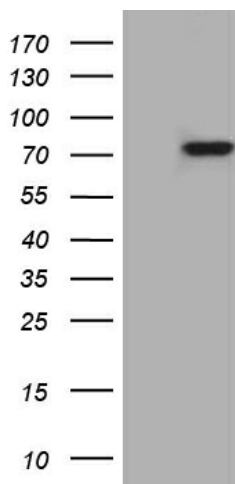
#### Product data:

Product Type:	Primary Antibodies
Clone Name:	OTI1A8
Applications:	WB
Recommended Dilution:	WB 1:500~2000
Reactivity:	Human
Host:	Mouse
Isotype:	IgG2b
Clonality:	Monoclonal
Immunogen:	Human recombinant protein fragment corresponding to amino acids 1-275 of human PTCD3 (NP_060422) produced in E.coli.
Formulation:	PBS (pH 7.3) containing 1% BSA, 50% glycerol and 0.02% sodium azide.
Concentration:	1 mg/ml
Purification:	Purified from mouse ascites fluids or tissue culture supernatant by affinity chromatography (protein A/G)
Conjugation:	Unconjugated
Storage:	Store at -20°C as received.
Stability:	Stable for 12 months from date of receipt.
Predicted Protein Size:	78.4 kDa
Gene Name:	pentatricopeptide repeat domain 3
Database Link:	<a href="#">NP_060422</a> <a href="#">Entrez Gene 55037 Human</a> <a href="#">Q96EY7</a>
Synonyms:	MRP-S39

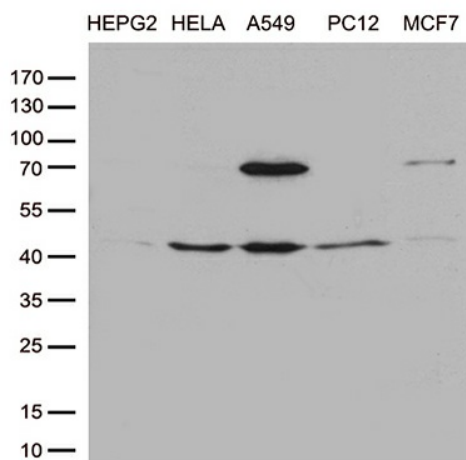


[View online »](#)

**Product images:**



HEK293T cells were transfected with the pCMV6-ENTRY control (Cat# [PS100001], Left lane) or pCMV6-ENTRY PTCD3 (Cat# [RC204119], Right lane) cDNA for 48 hrs and lysed. Equivalent amounts of cell lysates (5 ug per lane) were separated by SDS-PAGE and immunoblotted with anti-PTCD3(Cat# [TA810262]). Positive lysates [LY402633] (100ug) and [LC402633] (20ug) can be purchased separately from OriGene.



Western blot analysis of extracts (35ug) from cell lines by using anti-PTCD3 monoclonal antibody (1:500).