

Product datasheet for **TA810257M**

MLH1 Mouse Monoclonal Antibody [Clone ID: OTI4H6]

Product data:

Product Type:	Primary Antibodies
Clone Name:	OTI4H6
Applications:	IHC, WB
Recommended Dilution:	WB 1:500~2000, IHC 1:150
Reactivity:	Human, Mouse, Rat
Host:	Mouse
Isotype:	IgG1
Clonality:	Monoclonal
Immunogen:	Human recombinant protein fragment corresponding to amino acids 299-527 of human MLH1 (NP_000240) produced in E.coli.
Formulation:	PBS (pH 7.3) containing 1% BSA, 50% glycerol and 0.02% sodium azide.
Concentration:	1 mg/ml
Purification:	Purified from mouse ascites fluids or tissue culture supernatant by affinity chromatography (protein A/G)
Conjugation:	Unconjugated
Storage:	Store at -20°C as received.
Stability:	Stable for 12 months from date of receipt.
Predicted Protein Size:	84.4 kDa
Gene Name:	mutL homolog 1
Database Link:	NP_000240 Entrez Gene 17350 Mouse Entrez Gene 81685 Rat Entrez Gene 4292 Human P40692
Background:	This gene was identified as a locus frequently mutated in hereditary nonpolyposis colon cancer (HNPCC). It is a human homolog of the E. coli DNA mismatch repair gene mutL, consistent with the characteristic alterations in microsatellite sequences (RER+phenotype) found in HNPCC. Alternative splicing results in multiple transcript variants encoding distinct isoforms. Additional transcript variants have been described, but their full-length natures have not been determined. [provided by RefSeq, Nov 2009]

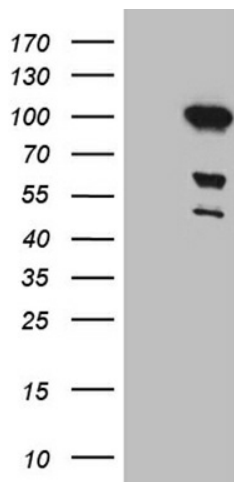

[View online »](#)

Synonyms: COCA2; FCC2; hMLH1; HNPCC; HNPCC2; MMRCS1

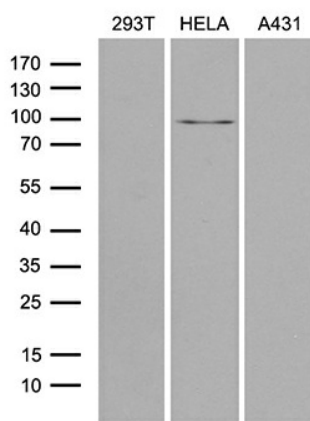
Protein Families: Druggable Genome

Protein Pathways: Colorectal cancer, Endometrial cancer, Mismatch repair, Pathways in cancer

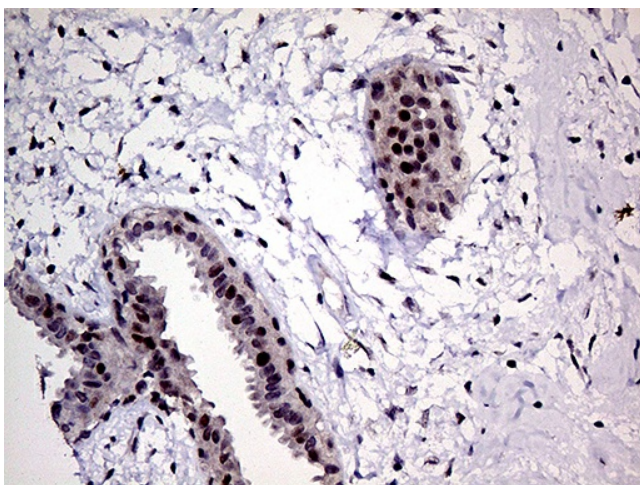
Product images:



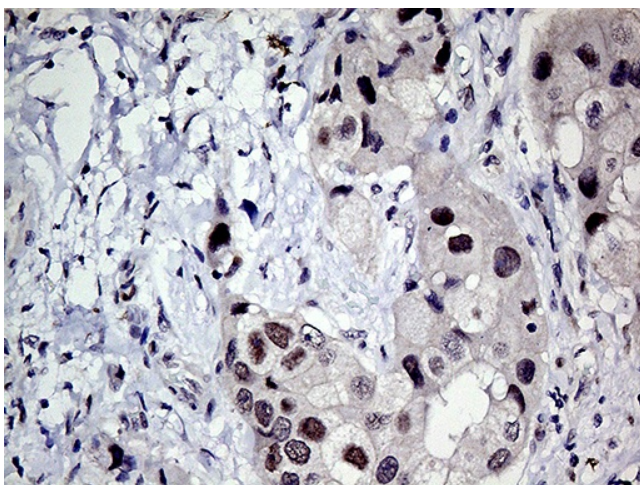
HEK293T cells were transfected with the pCMV6-ENTRY control (Left lane) or pCMV6-ENTRY MLH1 ([RC201607], Right lane) cDNA for 48 hrs and lysed. Equivalent amounts of cell lysates (5 ug per lane) were separated by SDS-PAGE and immunoblotted with anti-MLH1 (1:2000). Positive lysates [LY400096] (100ug) and [LC400096] (20ug) can be purchased separately from OriGene.



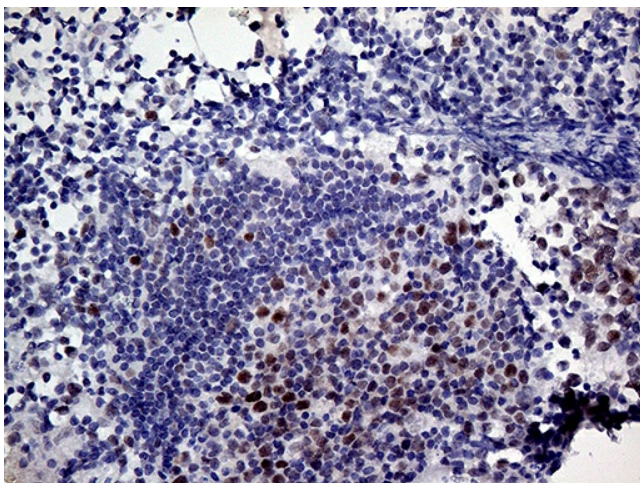
Western blot analysis of extracts (35ug) from 3 different cell lines by using anti-MLH1 monoclonal antibody (1:500).



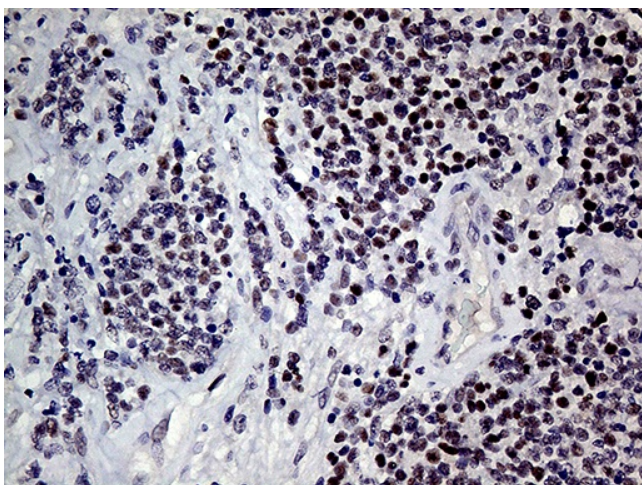
Immunohistochemical staining of paraffin-embedded Human breast tissue within the normal limits using anti-MLH1 mouse monoclonal antibody. Heat-induced epitope retrieval by EDTA solution buffer pH 8.0 at 120°C for 3 min.



Immunohistochemical staining of paraffin-embedded Adenocarcinoma of Human breast tissue using anti-MLH1 mouse monoclonal antibody. Heat-induced epitope retrieval by EDTA solution buffer pH 8.0 at 120°C for 3 min.



Immunohistochemical staining of paraffin-embedded Human lymph node tissue within the normal limits using anti-MLH1 mouse monoclonal antibody. Heat-induced epitope retrieval by EDTA solution buffer pH 8.0 at 120°C for 3 min.



Immunohistochemical staining of paraffin-embedded Human lymphoma tissue using anti-MLH1 mouse monoclonal antibody. Heat-induced epitope retrieval by EDTA solution buffer pH 8.0 at 120°C for 3 min.