

Product datasheet for **TA810245M**

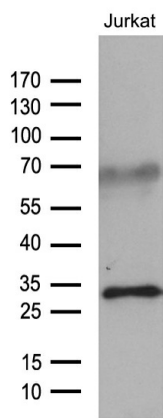
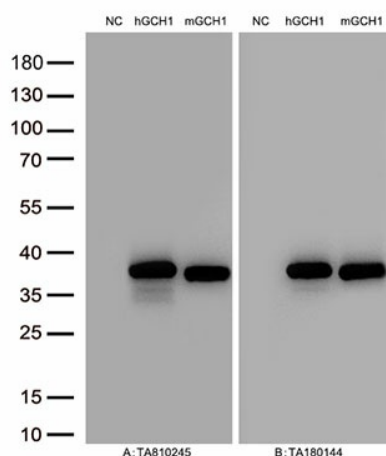
GTP cyclohydrolase 1 (GCH1) Mouse Monoclonal Antibody [Clone ID: OTI3A3]

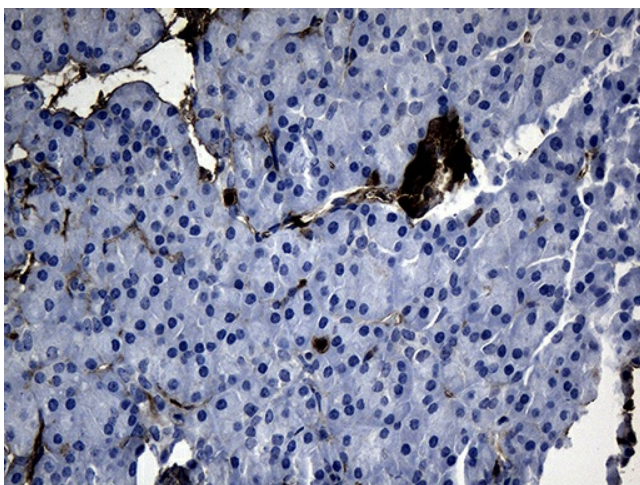
Product data:

Product Type:	Primary Antibodies
Clone Name:	OTI3A3
Applications:	IHC, WB
Recommended Dilution:	WB 1:500~2000, IHC 1:500
Reactivity:	Human, Mouse, Rat
Host:	Mouse
Isotype:	IgG2a
Clonality:	Monoclonal
Immunogen:	Full length human recombinant protein of human GCH1 (NP_001019195) produced in E.coli.
Formulation:	PBS (pH 7.3) containing 1% BSA, 50% glycerol and 0.02% sodium azide.
Concentration:	1 mg/ml
Purification:	Purified from mouse ascites fluids or tissue culture supernatant by affinity chromatography (protein A/G)
Conjugation:	Unconjugated
Storage:	Store at -20°C as received.
Stability:	Stable for 12 months from date of receipt.
Predicted Protein Size:	27.7 kDa
Gene Name:	GTP cyclohydrolase 1
Database Link:	NP_001019195 Entrez Gene 14528 Mouse Entrez Gene 29244 Rat Entrez Gene 2643 Human P30793
Synonyms:	DYT5; DYT5a; DYT14; GCH; GTP-CH-1; GTPCH1; HPABH4B
Protein Families:	Druggable Genome
Protein Pathways:	Folate biosynthesis, Metabolic pathways

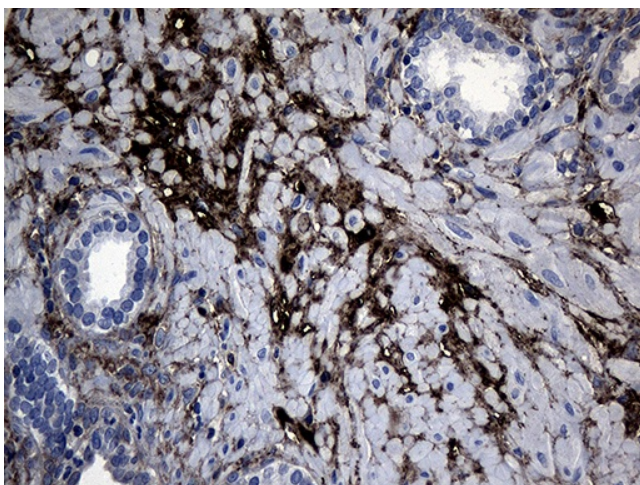
[View online »](#)

Product images:

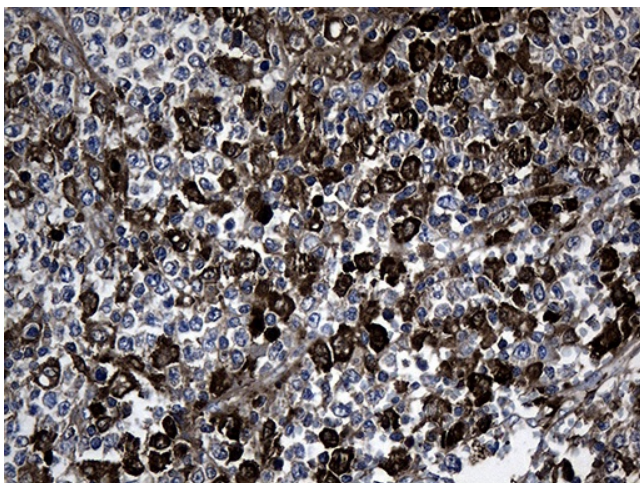




Immunohistochemical staining of paraffin-embedded Human pancreas tissue within the normal limits using anti-GCH1 mouse monoclonal antibody. Heat-induced epitope retrieval by EDTA solution buffer pH 8.0 at 120°C for 3 min.



Immunohistochemical staining of paraffin-embedded Carcinoma of Human prostate tissue using anti-GCH1 mouse monoclonal antibody. Heat-induced epitope retrieval by EDTA solution buffer pH 8.0 at 120°C for 3 min.



Immunohistochemical staining of paraffin-embedded Human lymphoma tissue using anti-GCH1 mouse monoclonal antibody. Heat-induced epitope retrieval by EDTA solution buffer pH 8.0 at 120°C for 3 min.