

Product datasheet for TA810236M

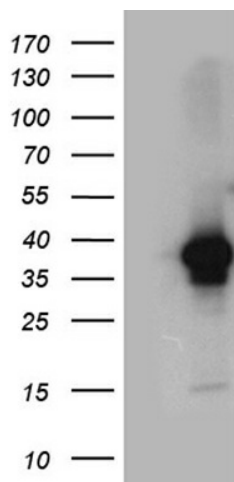
DAPP1 Mouse Monoclonal Antibody [Clone ID: OTI7D4]

Product data:

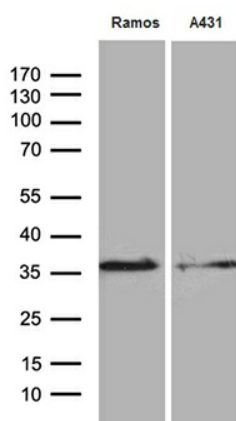
Product Type:	Primary Antibodies
Clone Name:	OTI7D4
Applications:	IHC, WB
Recommended Dilution:	WB 1:500~2000, IHC 1:500
Reactivity:	Human, Mouse, Rat
Host:	Mouse
Isotype:	IgG1
Clonality:	Monoclonal
Immunogen:	Full length human recombinant protein of human DAPP1 (NP_055210) produced in HEK293T cell.
Formulation:	PBS (pH 7.3) containing 1% BSA, 50% glycerol and 0.02% sodium azide.
Concentration:	1 mg/ml
Purification:	Purified from mouse ascites fluids or tissue culture supernatant by affinity chromatography (protein A/G)
Conjugation:	Unconjugated
Storage:	Store at -20°C as received.
Stability:	Stable for 12 months from date of receipt.
Predicted Protein Size:	32.6 kDa
Gene Name:	dual adaptor of phosphotyrosine and 3-phosphoinositides 1
Database Link:	NP_055210 Entrez Gene 26377 Mouse Entrez Gene 362046 Rat Entrez Gene 27071 Human Q9UN19
Synonyms:	BAM32
Protein Families:	Druggable Genome, Phosphatase
Protein Pathways:	B cell receptor signaling pathway


[View online »](#)

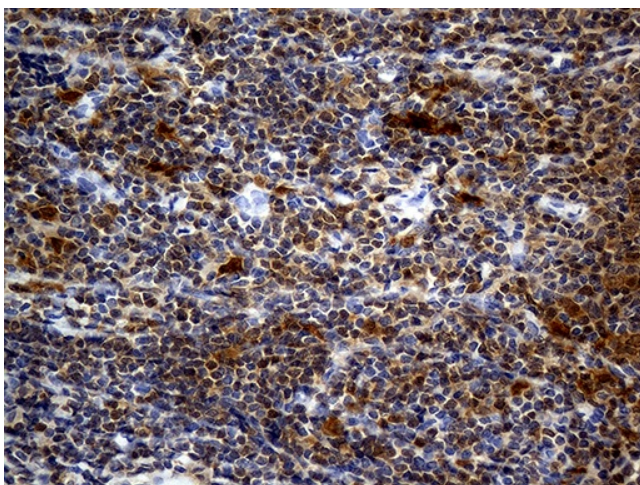
Product images:



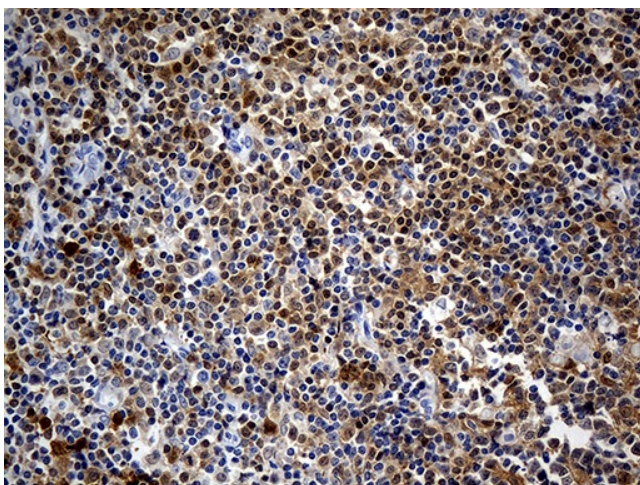
HEK293T cells were transfected with the pCMV6-ENTRY control (Cat# [PS100001], Left lane) or pCMV6-ENTRY DAPP1 (Cat# [RC215474], Right lane) cDNA for 48 hrs and lysed. Equivalent amounts of cell lysates (5 ug per lane) were separated by SDS-PAGE and immunoblotted with anti-DAPP1 (Cat# [TA810236])(1:2000). Positive lysates [LY402326] (100ug) and [LC402326] (20ug) can be purchased separately from OriGene.



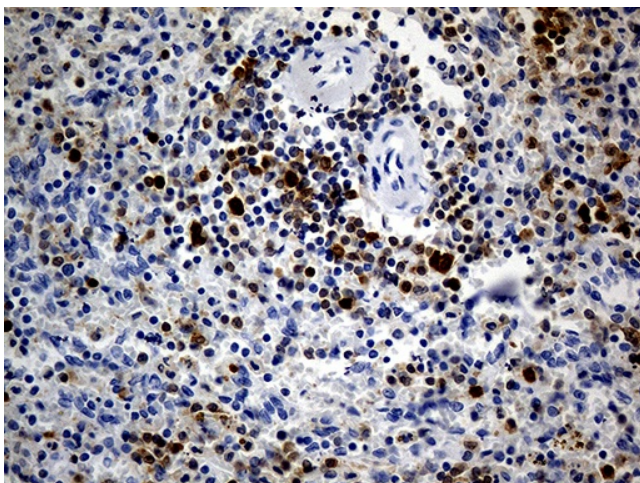
Western blot analysis of extracts (35ug) from 2 different cell lines by using anti-DAPP1 monoclonal antibody (1:500).



Immunohistochemical staining of paraffin-embedded Human lymphoma tissue using anti-DAPP1 mouse monoclonal antibody. Heat-induced epitope retrieval by EDTA solution buffer pH 8.0 at 120°C for 3 min.



Immunohistochemical staining of paraffin-embedded Human tonsil within the normal limits using anti-DAPP1 mouse monoclonal antibody. Heat-induced epitope retrieval by EDTA solution buffer pH 8.0 at 120°C for 3 min.



Immunohistochemical staining of paraffin-embedded Human spleen tissue within the normal limits using anti-DAPP1 mouse monoclonal antibody. Heat-induced epitope retrieval by EDTA solution buffer pH 8.0 at 120°C for 3 min.