

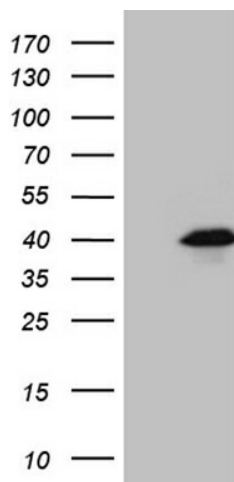
## Product datasheet for **TA810234M**

### **AEBP2 Mouse Monoclonal Antibody [Clone ID: OTI10E1]**

#### **Product data:**

Product Type:	Primary Antibodies
Clone Name:	OTI10E1
Applications:	WB
Recommended Dilution:	WB 1:2000
Reactivity:	Human, Mouse, Rat
Host:	Mouse
Isotype:	IgG2a
Clonality:	Monoclonal
Immunogen:	Full length human recombinant protein of human AEBP2 (NP_694939) produced in E.coli.
Formulation:	PBS (pH 7.3) containing 1% BSA, 50% glycerol and 0.02% sodium azide.
Concentration:	1 mg/ml
Purification:	Purified from mouse ascites fluids or tissue culture supernatant by affinity chromatography (protein A/G)
Conjugation:	Unconjugated
Storage:	Store at -20°C as received.
Stability:	Stable for 12 months from date of receipt.
Predicted Protein Size:	52.6 kDa
Gene Name:	AE binding protein 2
Database Link:	<a href="#">NP_694939</a> <a href="#">Entrez Gene 11569 Mouse</a> <a href="#">Entrez Gene 297705 Rat</a> <a href="#">Entrez Gene 121536 Human</a> <a href="#">Q6ZN18</a>
Synonyms:	MGC17922


[View online »](#)

**Product images:**

HEK293T cells were transfected with the pCMV6-ENTRY control (Left lane) or pCMV6-ENTRY AEBP2 ([RC203929], Right lane) cDNA for 48 hrs and lysed. Equivalent amounts of cell lysates (5 ug per lane) were separated by SDS-PAGE and immunoblotted with anti-AEBP2 (1:2000). Positive lysates [LY403504] (100ug) and [LC403504] (20ug) can be purchased separately from OriGene.