

Product datasheet for **TA810232M**

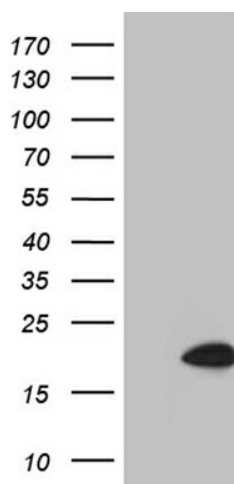
Saitohin (STH) Mouse Monoclonal Antibody [Clone ID: OTI7F8]

Product data:

Product Type:	Primary Antibodies
Clone Name:	OTI7F8
Applications:	WB
Recommended Dilution:	WB 1:2000
Reactivity:	Human
Host:	Mouse
Isotype:	IgG2b
Clonality:	Monoclonal
Immunogen:	Full length human recombinant protein of human STH (NP_001007533) produced in E.coli.
Formulation:	PBS (pH 7.3) containing 1% BSA, 50% glycerol and 0.02% sodium azide.
Concentration:	1 mg/ml
Purification:	Purified from mouse ascites fluids or tissue culture supernatant by affinity chromatography (protein A/G)
Conjugation:	Unconjugated
Storage:	Store at -20°C as received.
Stability:	Stable for 12 months from date of receipt.
Gene Name:	saitohin
Database Link:	NP_001007533 Entrez Gene 246744 Human Q8IWL8
Synonyms:	MAPTIT

[View online »](#)

Product images:



HEK293T cells were transfected with the pCMV6-ENTRY control (Cat# [PS100001], Left lane) or pCMV6-ENTRY STH (Cat# [RC224514], Right lane) cDNA for 48 hrs and lysed. Equivalent amounts of cell lysates (5 ug per lane) were separated by SDS-PAGE and immunoblotted with anti-STH (Cat# [TA810232])(1:2000).