

## Product datasheet for **TA810212AM**

### PPP4C Mouse Monoclonal Antibody (Biotin conjugated) [Clone ID: OTI2H8]

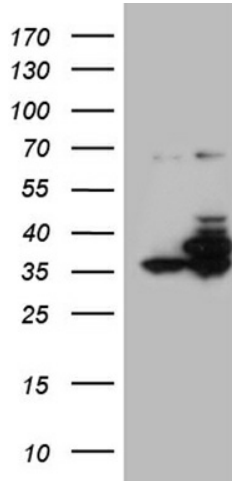
#### Product data:

Product Type:	Primary Antibodies
Clone Name:	OTI2H8
Applications:	IHC, WB
Recommended Dilution:	WB 1:500~2000, IHC 1:2000
Reactivity:	Human, Mouse, Rat
Host:	Mouse
Isotype:	IgG2b
Clonality:	Monoclonal
Immunogen:	Full length human recombinant protein of human PPP4C (NP_002711) produced in E.coli.
Formulation:	PBS (pH 7.3) containing 1% BSA, 50% glycerol and 0.02% sodium azide.
Concentration:	0.5 mg/ml
Purification:	Purified from mouse ascites fluids or tissue culture supernatant by affinity chromatography (protein A/G)
Conjugation:	Biotin
Storage:	Store at -20°C as received.
Stability:	Stable for 12 months from date of receipt.
Gene Name:	protein phosphatase 4 catalytic subunit
Database Link:	<a href="#">NP_002711</a> <a href="#">Entrez Gene 56420 Mouse</a> <a href="#">Entrez Gene 171366 Rat</a> <a href="#">Entrez Gene 5531 Human</a> <a href="#">P60510</a>
Synonyms:	PP-X; PP4; PP4C; PPH3; PPP4; PPX
Protein Families:	Druggable Genome, Phosphatase

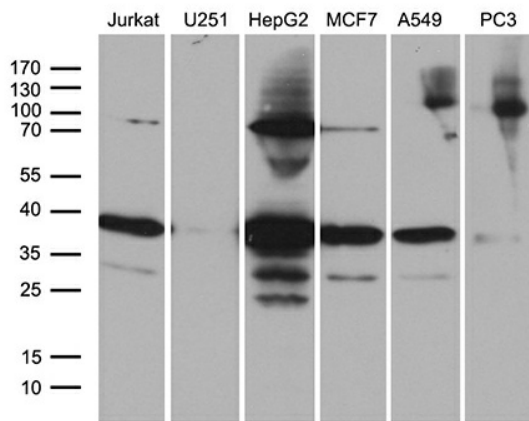


[View online »](#)

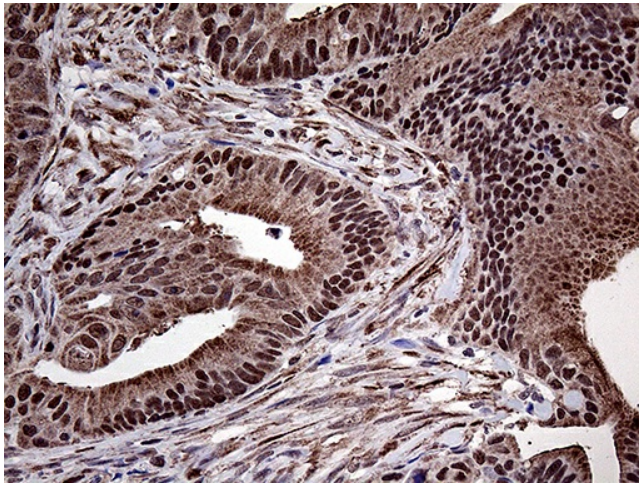
**Product images:**



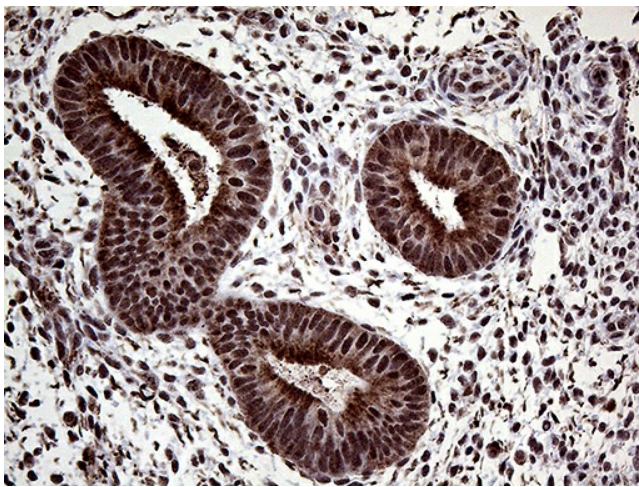
HEK293T cells were transfected with the pCMV6-ENTRY control (Left lane) or pCMV6-ENTRY PPP4C ([RC200538], Right lane) cDNA for 48 hrs and lysed. Equivalent amounts of cell lysates (5 ug per lane) were separated by SDS-PAGE and immunoblotted with anti-PPP4C (1:2000).



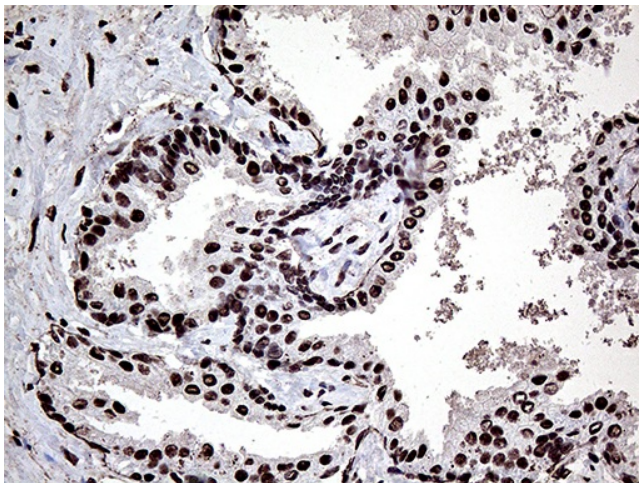
Western blot analysis of extracts (35ug) from 6 different cell lines by using anti-PPP4C monoclonal antibody (1:500).



Immunohistochemical staining of paraffin-embedded Adenocarcinoma of Human colon tissue using anti-PPP4C mouse monoclonal antibody. (Heat-induced epitope retrieval by 1mM EDTA in 10mM Tris buffer (pH8.5) at 120°C for 3min, [TA810212]) (1:2000)



Immunohistochemical staining of paraffin-embedded Human endometrium tissue within the normal limits using anti-PPP4C mouse monoclonal antibody. (Heat-induced epitope retrieval by 1mM EDTA in 10mM Tris buffer (pH8.5) at 120°C for 3min, [TA810212]) (1:2000)



Immunohistochemical staining of paraffin-embedded Carcinoma of Human prostate tissue using anti-PPP4C mouse monoclonal antibody. (Heat-induced epitope retrieval by 1mM EDTA in 10mM Tris buffer (pH8.5) at 120°C for 3min, [TA810212]) (1:2000)