

## Product datasheet for **TA810210**

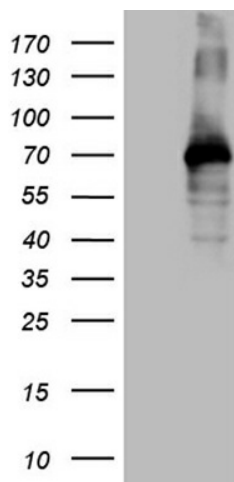
### ZFP37 Mouse Monoclonal Antibody [Clone ID: OTI5E3]

#### Product data:

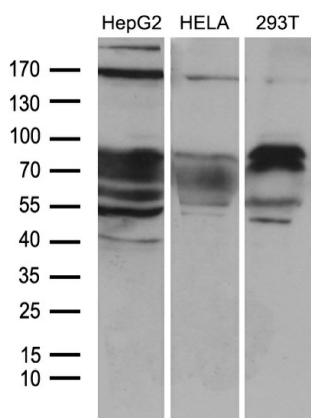
Product Type:	Primary Antibodies
Clone Name:	OTI5E3
Applications:	WB
Recommended Dilution:	WB 1:500~2000
Reactivity:	Human
Host:	Mouse
Isotype:	IgG1
Clonality:	Monoclonal
Immunogen:	Full length human recombinant protein of human ZFP37 (NP_003399) produced in E.coli.
Formulation:	PBS (pH 7.3) containing 1% BSA, 50% glycerol and 0.02% sodium azide.
Concentration:	1 mg/ml
Purification:	Purified from mouse ascites fluids or tissue culture supernatant by affinity chromatography (protein A/G)
Conjugation:	Unconjugated
Storage:	Store at -20°C as received.
Stability:	Stable for 12 months from date of receipt.
Predicted Protein Size:	71 kDa
Gene Name:	ZFP37 zinc finger protein
Database Link:	<a href="#">NP_003399</a> <a href="#">Entrez Gene 7539 Human</a> <a href="#">Q9Y6Q3</a>
Synonyms:	zfp-37; ZNF906
Protein Families:	Transcription Factors



[View online »](#)

**Product images:**


HEK293T cells were transfected with the pCMV6-ENTRY control (Left lane) or pCMV6-ENTRY ZFP37 ([RC220191], Right lane) cDNA for 48 hrs and lysed. Equivalent amounts of cell lysates (5 ug per lane) were separated by SDS-PAGE and immunoblotted with anti-ZFP37 (1:2000). Positive lysates [LY418700] (100ug) and [LC418700] (20ug) can be purchased separately from OriGene.



Western blot analysis of extracts (35ug) from 3 different cell lines by using anti-ZFP37 monoclonal antibody (1:500).