

Product datasheet for **TA810204AM**

CTLA4 Mouse Monoclonal Antibody (Biotin conjugated) [Clone ID: OTI8F1]

Product data:

Product Type:	Primary Antibodies
Clone Name:	OTI8F1
Applications:	FC, WB
Recommended Dilution:	WB 1:500
Reactivity:	Human
Host:	Mouse
Isotype:	IgG1
Clonality:	Monoclonal
Immunogen:	Full length human recombinant protein of human CTLA4 (NP_001032720) produced in HEK293T cell.
Formulation:	PBS (pH 7.3) containing 1% BSA, 50% glycerol and 0.02% sodium azide.
Concentration:	0.5 mg/ml
Purification:	Purified from mouse ascites fluids or tissue culture supernatant by affinity chromatography (protein A/G)
Conjugation:	Biotin
Storage:	Store at -20°C as received.
Stability:	Stable for 12 months from date of receipt.
Predicted Protein Size:	15 kDa
Gene Name:	cytotoxic T-lymphocyte associated protein 4
Database Link:	NP_001032720 Entrez Gene 1493 Human P16410



[View online »](#)

Background:

This gene is a member of the immunoglobulin superfamily and encodes a protein which transmits an inhibitory signal to T cells. The protein contains a V domain, a transmembrane domain, and a cytoplasmic tail. Alternate transcriptional splice variants, encoding different isoforms, have been characterized. The membrane-bound isoform functions as a homodimer interconnected by a disulfide bond, while the soluble isoform functions as a monomer. Mutations in this gene have been associated with insulin-dependent diabetes mellitus, Graves disease, Hashimoto thyroiditis, celiac disease, systemic lupus erythematosus, thyroid-associated orbitopathy, and other autoimmune diseases. [provided by RefSeq, Jul 2008]

Synonyms:

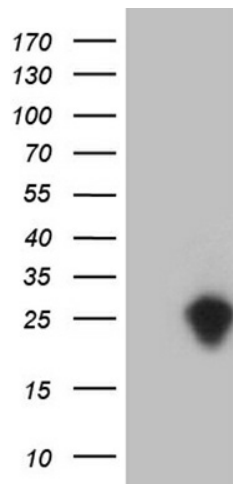
ALPS5; CD; CD152; CELIAC3; CTLA-4; GRD4; GSE; IDDM12

Protein Families:

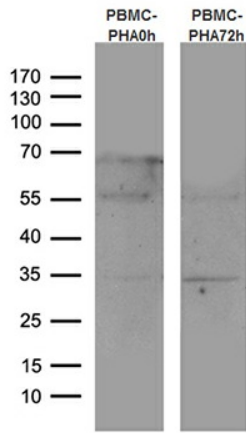
Druggable Genome, Transmembrane

Protein Pathways:

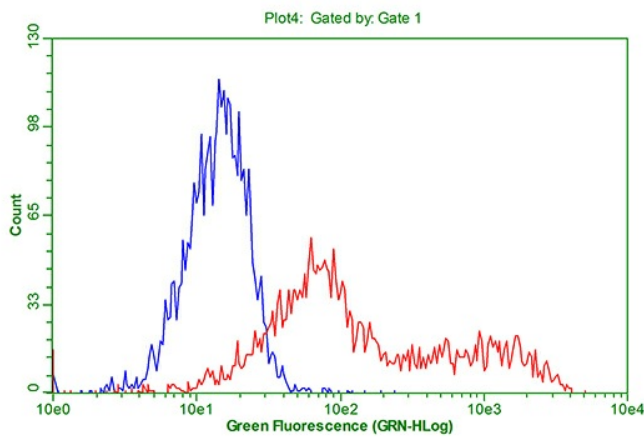
Autoimmune thyroid disease, Cell adhesion molecules (CAMs), T cell receptor signaling pathway

Product images:

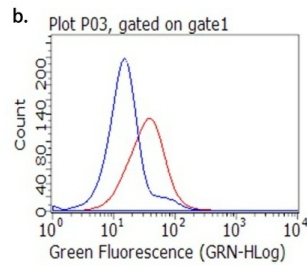
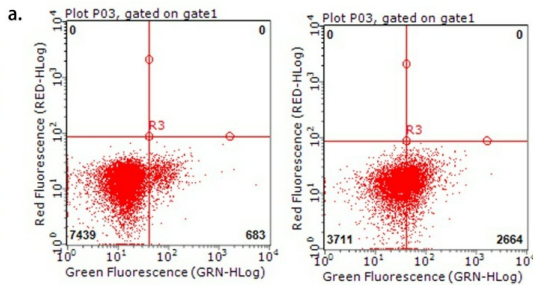
HEK293T cells were transfected with the pCMV6-ENTRY control (Cat# [PS100001], Left lane) or pCMV6-ENTRY CTLA4 (Cat# [RC213631], Right lane) cDNA for 48 hrs and lysed. Equivalent amounts of cell lysates (5 ug per lane) were separated by SDS-PAGE and immunoblotted with anti-CTLA4 (Cat# [TA810204])(1:500). Positive lysates [LY421970] (100ug) and [LC421970] (20ug) can be purchased separately from OriGene.



Western blot analysis of human peripheral blood mononuclear cells (PBMCs) by using anti-CTLA4 monoclonal antibody. Left: Unstimulated PBMC. Right: PBMC stimulated with 10ug/ml Phytohemagglutinin for 3 days (1:100).



HEK293T cells transfected with either CTL4 ([RC210150]) plasmid (red) or empty vector control plasmid (blue). The cells were immunostained by anti-CTLA4 antibody and analyzed by flow cytometry (1:100).



Flow cytometric analysis of CTLA4 expression on stimulated human peripheral blood mononuclear cells (PBMC). Unstimulated PBMC, (a.left, b.blue), or 10ug/ml Phytohemagglutinin-stimulated (3 days) PBMC, (a.right, b.red), were stained with Anti-Human CTLA4 antibody ([TA810204]) (1:100).