

## Product datasheet for **TA810197**

### **DAPP1 Mouse Monoclonal Antibody [Clone ID: OT1C10]**

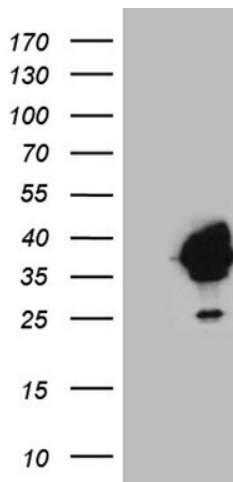
#### **Product data:**

|                         |   |
|-------------------------|---|
| Product Type:           | Primary Antibodies  |
| Clone Name:             | OT1C10  |
| Applications:           | WB  |
| Recommended Dilution:   | WB 1:500~2000   |
| Reactivity:             | Human, Mouse, Rat   |
| Host:                   | Mouse   |
| Isotype:                | IgG2b   |
| Clonality:              | Monoclonal  |
| Immunogen:              | Full length human recombinant protein of human DAPP1 (NP_055210) produced in HEK293T Cell.  |
| Formulation:            | PBS (pH 7.3) containing 1% BSA, 50% glycerol and 0.02% sodium azide.  |
| Concentration:          | 1 mg/ml   |
| Purification:           | Purified from mouse ascites fluids or tissue culture supernatant by affinity chromatography (protein A/G)   |
| Conjugation:            | Unconjugated  |
| Storage:                | Store at -20°C as received.   |
| Stability:              | Stable for 12 months from date of receipt.  |
| Predicted Protein Size: | 32.6 kDa  |
| Gene Name:              | dual adaptor of phosphotyrosine and 3-phosphoinositides 1   |
| Database Link:          | <a href="#">NP_055210</a><br><a href="#">Entrez Gene 26377 Mouse</a> <a href="#">Entrez Gene 362046 Rat</a> <a href="#">Entrez Gene 27071 Human</a><br><a href="#">Q9UN19</a> |
| Synonyms:               | BAM32   |
| Protein Families:       | Druggable Genome, Phosphatase   |
| Protein Pathways:       | B cell receptor signaling pathway   |

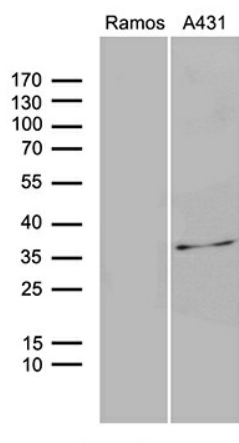


[View online »](#)

**Product images:**



HEK293T cells were transfected with the pCMV6-ENTRY control (Left lane) or pCMV6-ENTRY DAPP1 ([RC215474], Right lane) cDNA for 48 hrs and lysed. Equivalent amounts of cell lysates (5 ug per lane) were separated by SDS-PAGE and immunoblotted with anti-DAPP1 (1:2000). Positive lysates [LY402326] (100ug) and [LC402326] (20ug) can be purchased separately from OriGene.



Western blot analysis of extracts (35ug) from 2 different cell lines by using anti-DAPP1 monoclonal antibody (1:500).