

Product datasheet for **TA810196M**

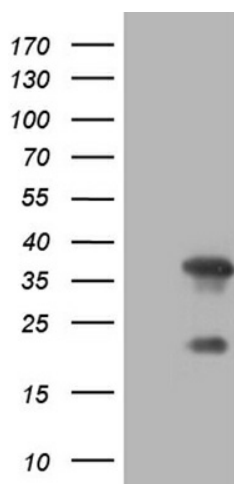
DAPP1 Mouse Monoclonal Antibody [Clone ID: OTI7A3]

Product data:

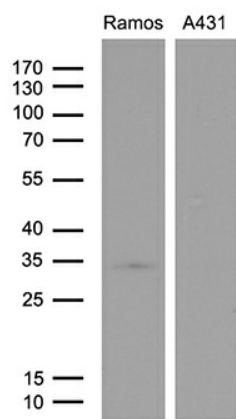
Product Type:	Primary Antibodies
Clone Name:	OTI7A3
Applications:	WB
Recommended Dilution:	WB 1:500~2000
Reactivity:	Human, Mouse, Rat
Host:	Mouse
Isotype:	IgG2a
Clonality:	Monoclonal
Immunogen:	Full length human recombinant protein of human DAPP1 (NP_055210) produced in HEK293T cell.
Formulation:	PBS (pH 7.3) containing 1% BSA, 50% glycerol and 0.02% sodium azide.
Concentration:	1 mg/ml
Purification:	Purified from mouse ascites fluids or tissue culture supernatant by affinity chromatography (protein A/G)
Conjugation:	Unconjugated
Storage:	Store at -20°C as received.
Stability:	Stable for 12 months from date of receipt.
Predicted Protein Size:	32.6 kDa
Gene Name:	dual adaptor of phosphotyrosine and 3-phosphoinositides 1
Database Link:	NP_055210 Entrez Gene 26377 Mouse Entrez Gene 362046 Rat Entrez Gene 27071 Human Q9UN19
Synonyms:	BAM32
Protein Families:	Druggable Genome, Phosphatase
Protein Pathways:	B cell receptor signaling pathway


[View online »](#)

Product images:



HEK293T cells were transfected with the pCMV6-ENTRY control (Left lane) or pCMV6-ENTRY DAPP1 ([RC215474], Right lane) cDNA for 48 hrs and lysed. Equivalent amounts of cell lysates (5 ug per lane) were separated by SDS-PAGE and immunoblotted with anti-DAPP1 (1:2000). Positive lysates [LY402326] (100ug) and [LC402326] (20ug) can be purchased separately from OriGene.



Western blot analysis of extracts (35ug) from 2 different cell lines by using anti-DAPP1 monoclonal antibody (1:500).