

Product datasheet for **TA810195S**

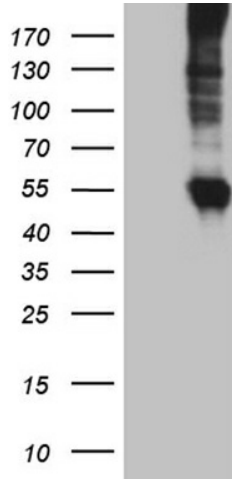
SLC22A17 Mouse Monoclonal Antibody [Clone ID: OTI2D6]

Product data:

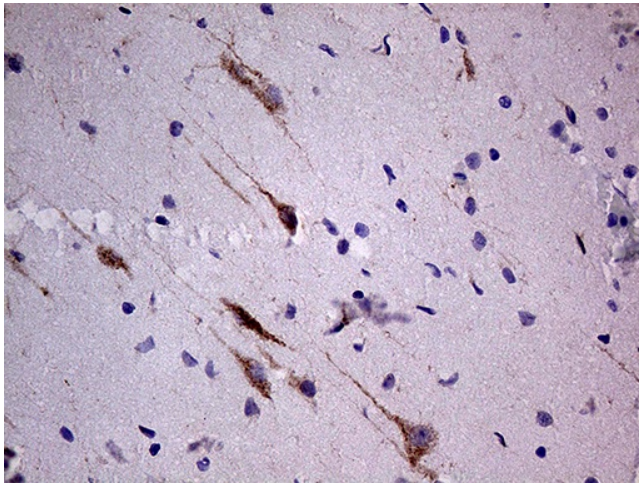
| | |
|-------------------------|---|
| Product Type: | Primary Antibodies |
| Clone Name: | OTI2D6 |
| Applications: | IHC, WB |
| Recommended Dilution: | WB 1:500, IHC 1:500 |
| Reactivity: | Human, Mouse, Rat |
| Host: | Mouse |
| Isotype: | IgG1 |
| Clonality: | Monoclonal |
| Immunogen: | Human recombinant protein fragment corresponding to amino acids 241-300 of human SLC22A17 (NP_057693) produced in E.coli. |
| Formulation: | PBS (pH 7.3) containing 1% BSA, 50% glycerol and 0.02% sodium azide. |
| Concentration: | 1 mg/ml |
| Purification: | Purified from mouse ascites fluids or tissue culture supernatant by affinity chromatography (protein A/G) |
| Conjugation: | Unconjugated |
| Storage: | Store at -20°C as received. |
| Stability: | Stable for 12 months from date of receipt. |
| Predicted Protein Size: | 55.5 kDa |
| Gene Name: | solute carrier family 22 member 17 |
| Database Link: | NP_057693 Entrez Gene 59049 Mouse Entrez Gene 305886 Rat Entrez Gene 51310 Human Q8WUG5 |
| Background: | Upon LCN2-binding, it is internalized. [UniProtKB/Swiss-Prot Function] |
| Synonyms: | 24p3R; BOCT; BOIT; hBOIT; NGALR; NGALR2; NGALR3 |
| Protein Families: | Druggable Genome, Transmembrane |



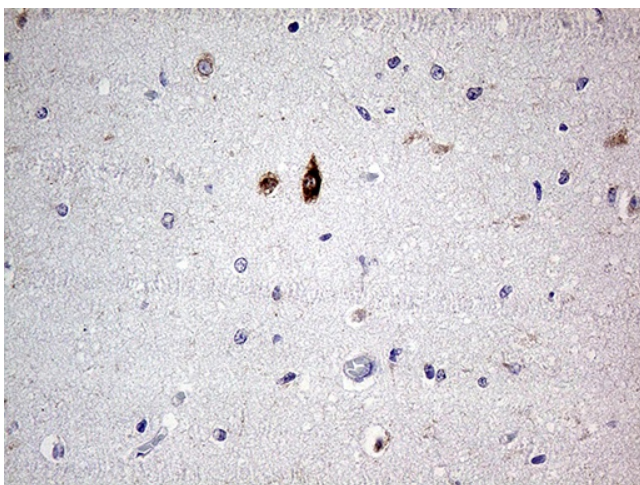
[View online »](#)

Product images:

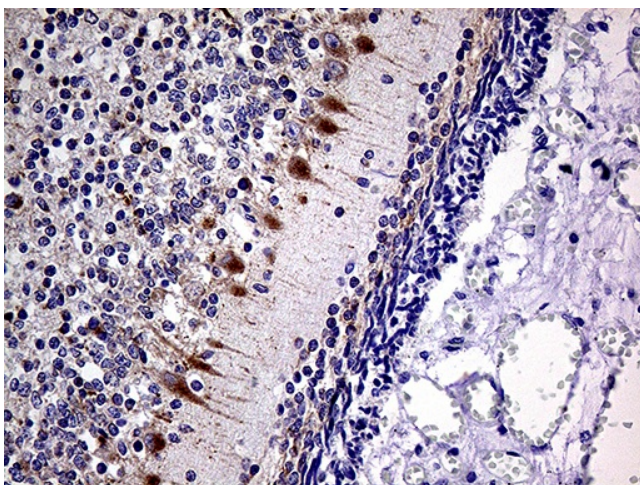
HEK293T cells were transfected with the pCMV6-ENTRY control (Cat# [PS100001], Left lane) or pCMV6-ENTRY SLC22A17 (Cat# [RC214220], Right lane) cDNA for 48 hrs and lysed. Equivalent amounts of cell lysates (5 ug per lane) were separated by SDS-PAGE and immunoblotted with anti-SLC22A17 (Cat# [TA810195])(1:500). Positive lysates [LY413864] (100ug) and [LC413864] (20ug) can be purchased separately from OriGene.



Immunohistochemical staining of paraffin-embedded Human adult brain tissue within the normal limits using anti-SLC22A17 mouse monoclonal antibody. (Heat-induced epitope retrieval by 1mM EDTA in 10mM Tris buffer (pH8.5) at 120°C for 3min, [TA810195]) (1:500)



Immunohistochemical staining of paraffin-embedded Human embryonic brain cortex tissue within the normal limits using anti-SLC22A17 mouse monoclonal antibody. (Heat-induced epitope retrieval by 1mM EDTA in 10mM Tris buffer (pH8.5) at 120°C for 3min, [TA810195]) (1:500)



Immunohistochemical staining of paraffin-embedded Human embryonic cerebellum within the normal limits using anti-SLC22A17 mouse monoclonal antibody. (Heat-induced epitope retrieval by 1mM EDTA in 10mM Tris buffer (pH8.5) at 120°C for 3min, [TA810195]) (1:500)