

Product datasheet for **TA810194**

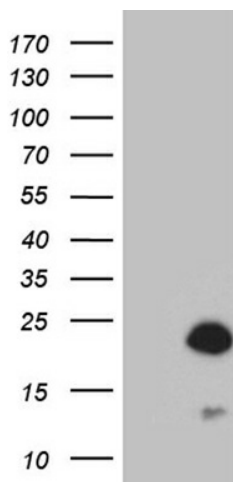
AGR2 Mouse Monoclonal Antibody [Clone ID: OTI2G8]

Product data:

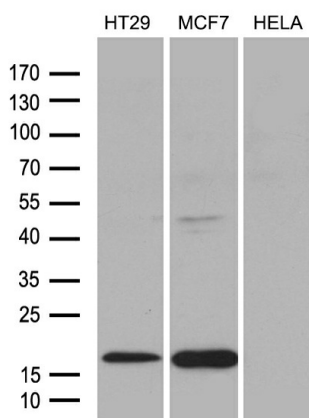
Product Type:	Primary Antibodies
Clone Name:	OTI2G8
Applications:	WB
Recommended Dilution:	WB 1:500
Reactivity:	Human, Mouse, Rat
Host:	Mouse
Isotype:	IgG1
Clonality:	Monoclonal
Immunogen:	Human recombinant protein fragment corresponding to amino acids 21-175 of human AGR2(NP_006399) produced in E.coli.
Formulation:	PBS (pH 7.3) containing 1% BSA, 50% glycerol and 0.02% sodium azide.
Concentration:	1 mg/ml
Purification:	Purified from mouse ascites fluids or tissue culture supernatant by affinity chromatography (protein A/G)
Conjugation:	Unconjugated
Storage:	Store at -20°C as received.
Stability:	Stable for 12 months from date of receipt.
Gene Name:	anterior gradient 2, protein disulphide isomerase family member
Database Link:	NP_006399 Entrez Gene 23795 Mouse Entrez Gene 298961 Rat Entrez Gene 10551 Human O95994
Synonyms:	AG2; GOB-4; HAG-2; HEL-S-116; PDIA17; XAG-2
Protein Families:	Secreted Protein



[View online »](#)

Product images:


HEK293T cells were transfected with the pCMV6-ENTRY control (Left lane) or pCMV6-ENTRY AGR2 ([RC202023], Right lane) cDNA for 48 hrs and lysed. Equivalent amounts of cell lysates (5 ug per lane) were separated by SDS-PAGE and immunoblotted with anti-AGR2 (1:500). Positive lysates [LY416668] (100ug) and [LC416668] (20ug) can be purchased separately from OriGene.



Western blot analysis of extracts (35ug) from 3 different cell lines by using anti-AGR2 monoclonal antibody (1:500).