

Product datasheet for **TA810190**

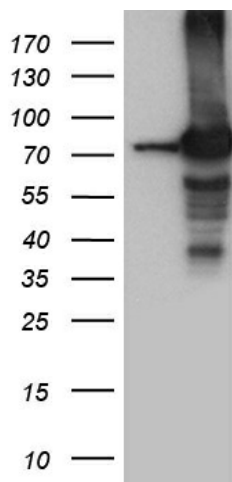
SEC23B Mouse Monoclonal Antibody [Clone ID: OTI8F3]

Product data:

Product Type:	Primary Antibodies
Clone Name:	OTI8F3
Applications:	WB
Recommended Dilution:	WB 1:2000
Reactivity:	Human, Mouse, Rat
Host:	Mouse
Isotype:	IgG1
Clonality:	Monoclonal
Immunogen:	Human recombinant protein fragment corresponding to amino acids 392-641 of human SEC23B(NP_116780) produced in E.coli.
Formulation:	PBS (pH 7.3) containing 1% BSA, 50% glycerol and 0.02% sodium azide.
Concentration:	1 mg/ml
Purification:	Purified from mouse ascites fluids or tissue culture supernatant by affinity chromatography (protein A/G)
Conjugation:	Unconjugated
Storage:	Store at -20°C as received.
Stability:	Stable for 12 months from date of receipt.
Predicted Protein Size:	86.3 kDa
Gene Name:	Sec23 homolog B, coat complex II component
Database Link:	NP_116780 Entrez Gene 27054 Mouse Entrez Gene 362226 Rat Entrez Gene 10483 Human Q15437
Synonyms:	CDA-II; CDAIL; CDAN2; HEMPAS



[View online »](#)

Product images:

HEK293T cells were transfected with the pCMV6-ENTRY control (Left lane) or pCMV6-ENTRY SEC23B ([RC210572], Right lane) cDNA for 48 hrs and lysed. Equivalent amounts of cell lysates (5 ug per lane) were separated by SDS-PAGE and immunoblotted with anti-SEC23B (1:2000). Positive lysates [LY403219] (100ug) and [LC403219] (20ug) can be purchased separately from OriGene.