

Product datasheet for **TA810182BM**

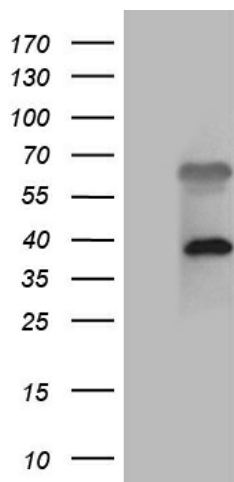
ZFYVE1 Mouse Monoclonal Antibody (HRP conjugated) [Clone ID: OTI6C2]

Product data:

Product Type:	Primary Antibodies
Clone Name:	OTI6C2
Applications:	WB
Recommended Dilution:	WB 1:2000
Reactivity:	Human, Mouse, Rat
Host:	Mouse
Isotype:	IgG2b
Clonality:	Monoclonal
Immunogen:	Human recombinant protein fragment corresponding to amino acids 1-308 of human ZFYVE1(NP_848535) produced in E.coli.
Formulation:	PBS (pH 7.3) containing 1% BSA, 50% glycerol.
Concentration:	0.5 mg/ml
Purification:	Purified from mouse ascites fluids or tissue culture supernatant by affinity chromatography (protein A/G)
Conjugation:	HRP
Storage:	Store at -20°C as received.
Stability:	Stable for 12 months from date of receipt.
Predicted Protein Size:	40.1 kDa
Gene Name:	zinc finger FYVE-type containing 1
Database Link:	NP_848535 Entrez Gene 217695 Mouse Entrez Gene 299188 Rat Entrez Gene 53349 Human Q9HBF4
Synonyms:	DFCP1; PPP1R172; SR3; TAFF1; ZNFN2A1



[View online »](#)

Product images:

HEK293T cells were transfected with the pCMV6-ENTRY control (Left lane) or pCMV6-ENTRY ZFYVE1 [RC211403], Right lane) cDNA for 48 hrs and lysed. Equivalent amounts of cell lysates (5 ug per lane) were separated by SDS-PAGE and immunoblotted with anti-ZFYVE1 (1:2000). Positive lysates [LY405962] (100ug) and [LC405962] (20ug) can be purchased separately from OriGene.