

Product datasheet for **TA810181AM**

SHARP2 (BHLHE40) Mouse Monoclonal Antibody (Biotin conjugated) [Clone ID: OTI6D6]

Product data:

| | |
|-------------------------|---|
| Product Type: | Primary Antibodies |
| Clone Name: | OTI6D6 |
| Applications: | WB |
| Recommended Dilution: | WB 1:2000 |
| Reactivity: | Human, Mouse, Rat |
| Host: | Mouse |
| Isotype: | IgG1 |
| Clonality: | Monoclonal |
| Immunogen: | Human recombinant protein fragment corresponding to amino acids 1-313 of human BHLHE40 (NP_003661) produced in E.coli. |
| Formulation: | PBS (pH 7.3) containing 1% BSA, 50% glycerol and 0.02% sodium azide. |
| Concentration: | 0.5 mg/ml |
| Purification: | Purified from mouse ascites fluids or tissue culture supernatant by affinity chromatography (protein A/G) |
| Conjugation: | Biotin |
| Storage: | Store at -20°C as received. |
| Stability: | Stable for 12 months from date of receipt. |
| Predicted Protein Size: | 45.3 kDa |
| Gene Name: | basic helix-loop-helix family member e40 |
| Database Link: | NP_003661 Entrez Gene 20893 Mouse Entrez Gene 79431 Rat Entrez Gene 8553 Human O14503 |
| Background: | This gene encodes a basic helix-loop-helix protein expressed in various tissues. The encoded protein can interact with ARNTL or compete for E-box binding sites in the promoter of PER1 and repress CLOCK/ARNTL's transactivation of PER1. This gene is believed to be involved in the control of circadian rhythm and cell differentiation. [provided by RefSeq, Feb 2014] |
| Synonyms: | BHLHB2; DEC1; HLHB2; SHARP-2; STRA13; Stra14 |

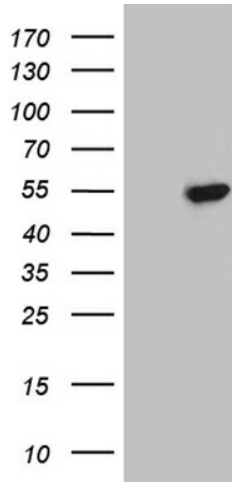


[View online »](#)

Protein Families: Transcription Factors

Protein Pathways: Circadian rhythm - mammal

Product images:



HEK293T cells were transfected with the pCMV6-ENTRY control (Left lane) or pCMV6-ENTRY BHLHE40 ([RC210294], Right lane) cDNA for 48 hrs and lysed. Equivalent amounts of cell lysates (5 ug per lane) were separated by SDS-PAGE and immunoblotted with anti-BHLH. Positive lysates [LY418509] (100ug) and [LC418509] (20ug) can be purchased separately from OriGene.