

## Product datasheet for **TA810177AM**

### **PTPN22 Mouse Monoclonal Antibody (Biotin conjugated) [Clone ID: OTI6B1]**

#### **Product data:**

Product Type:	Primary Antibodies
Clone Name:	OTI6B1
Applications:	IHC, WB
Recommended Dilution:	WB 1:2000, IHC 1:1000
Reactivity:	Human
Host:	Mouse
Isotype:	IgG1
Clonality:	Monoclonal
Immunogen:	Human recombinant protein fragment corresponding to amino acids 359-449 of human PTPN22 (NP_057051) produced in E.coli.
Formulation:	PBS (pH 7.3) containing 1% BSA, 50% glycerol and 0.02% sodium azide.
Concentration:	0.5 mg/ml
Purification:	Purified from mouse ascites fluids or tissue culture supernatant by affinity chromatography (protein A/G)
Conjugation:	Biotin
Storage:	Store at -20°C as received.
Stability:	Stable for 12 months from date of receipt.
Predicted Protein Size:	91.5 kDa
Gene Name:	protein tyrosine phosphatase, non-receptor type 22
Database Link:	<a href="#">NP_057051</a> <a href="#">Entrez Gene 26191 Human</a> <a href="#">Q9Y2R2</a>



[View online »](#)

**Background:**

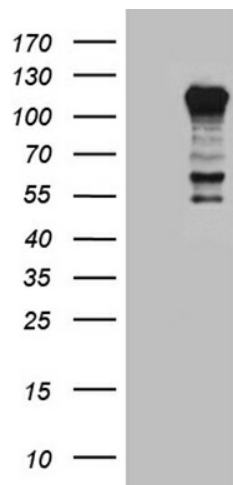
This gene encodes of member of the non-receptor class 4 subfamily of the protein-tyrosine phosphatase family. The encoded protein is a lymphoid-specific intracellular phosphatase that associates with the molecular adapter protein CBL and may be involved in regulating CBL function in the T-cell receptor signaling pathway. Mutations in this gene may be associated with a range of autoimmune disorders including Type 1 Diabetes, rheumatoid arthritis, systemic lupus erythematosus and Graves' disease. Alternatively spliced transcript variants encoding distinct isoforms have been described. [provided by RefSeq, Mar 2009]

**Synonyms:**

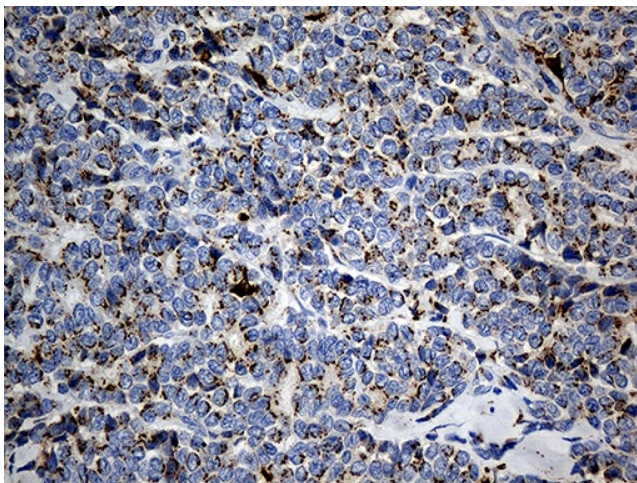
LYP; LYP1; LYP2; PEP; PTPN8

**Protein Families:**

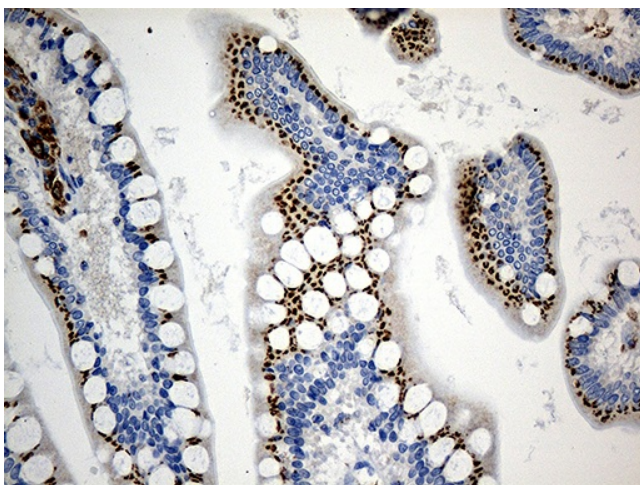
Druggable Genome, Phosphatase

**Product images:**

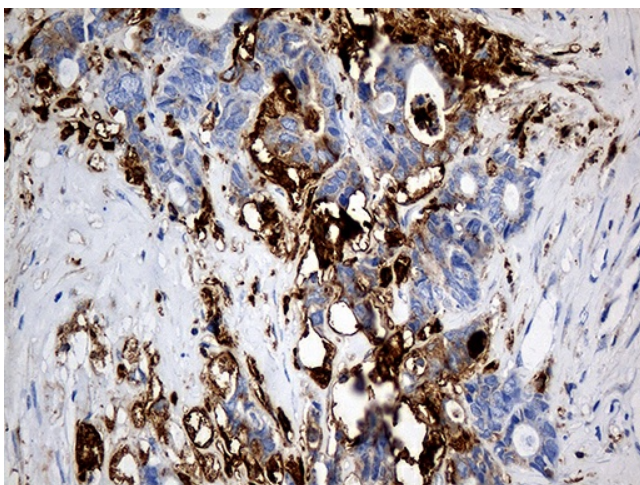
HEK293T cells were transfected with the pCMV6-ENTRY control (Cat# [PS100001], Left lane) or pCMV6-ENTRY PTPN22 (Cat# [RC218969], Right lane) cDNA for 48 hrs and lysed. Equivalent amounts of cell lysates (5 ug per lane) were separated by SDS-PAGE and immunoblotted with anti-PTPN22 antibody (Cat# [TA810177]). Positive lysates [LY414274] (100ug) and [LC414274] (20ug) can be purchased separately from OriGene.



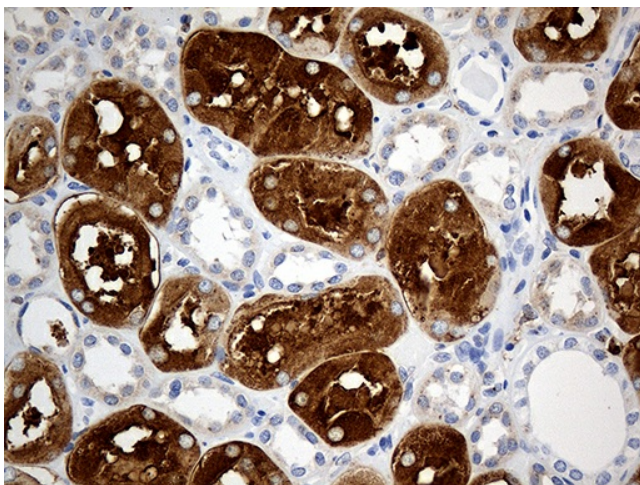
Immunohistochemical staining of paraffin-embedded Adenocarcinoma of Human breast tissue using anti-PTPN22 mouse monoclonal antibody. (Heat-induced epitope retrieval by 1mM EDTA in 10mM Tris buffer (pH8.5) at 120°C for 3min, [TA810177]) (1:1000)



Immunohistochemical staining of paraffin-embedded Human colon tissue within the normal limits using anti-PTPN22 mouse monoclonal antibody. (Heat-induced epitope retrieval by 1mM EDTA in 10mM Tris buffer (pH8.5) at 120°C for 3min, [TA810177]) (1:1000)

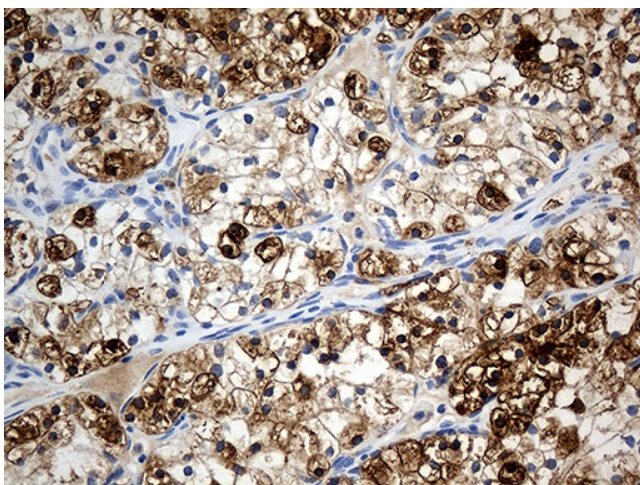


Immunohistochemical staining of paraffin-embedded Adenocarcinoma of Human colon tissue using anti-PTPN22 mouse monoclonal antibody. (Heat-induced epitope retrieval by 1mM EDTA in 10mM Tris buffer (pH8.5) at 120°C for 3min, [TA810177]) (1:1000)

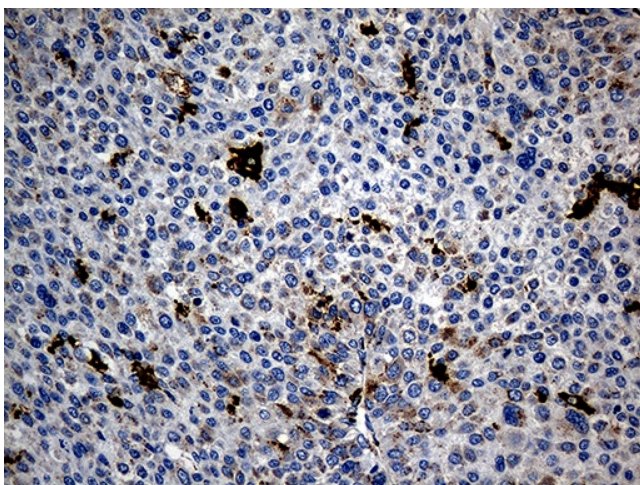


Immunohistochemical staining of paraffin-embedded Human Kidney tissue within the normal limits using anti-PTPN22 mouse monoclonal antibody. (Heat-induced epitope retrieval by 1mM EDTA in 10mM Tris buffer (pH8.5) at 120°C for 3min, [TA810177]) (1:1000)

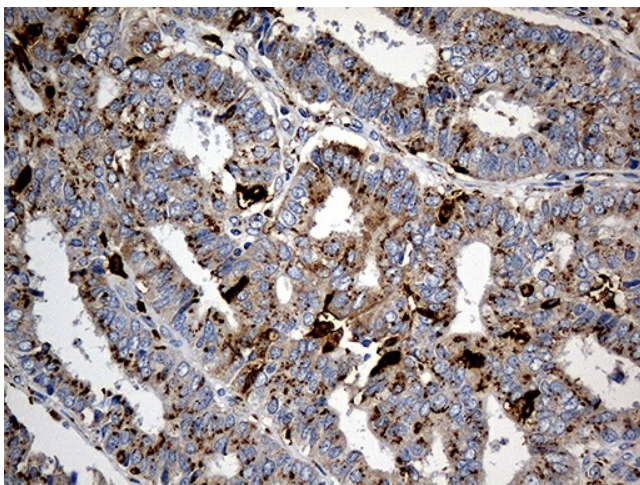




Immunohistochemical staining of paraffin-embedded Carcinoma of Human kidney tissue using anti-PTPN22 mouse monoclonal antibody. (Heat-induced epitope retrieval by 1mM EDTA in 10mM Tris buffer (pH8.5) at 120°C for 3min, [TA810177]) (1:1000)

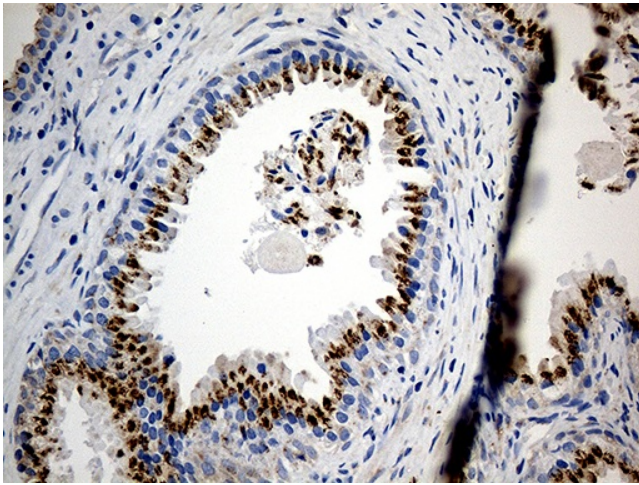


Immunohistochemical staining of paraffin-embedded Carcinoma of Human liver tissue using anti-PTPN22 mouse monoclonal antibody. (Heat-induced epitope retrieval by 1mM EDTA in 10mM Tris buffer (pH8.5) at 120°C for 3min, [TA810177]) (1:1000)

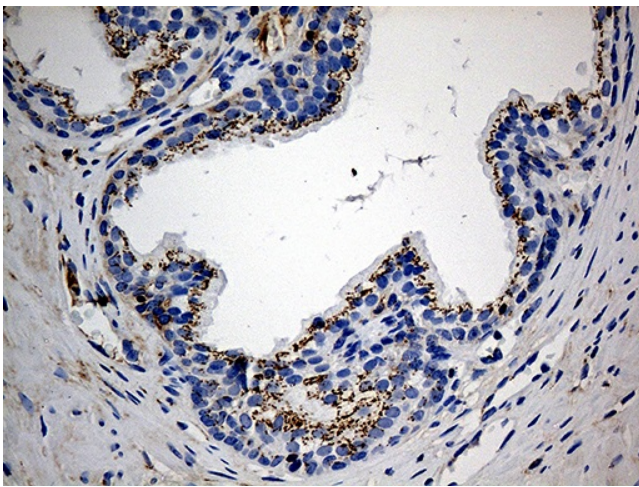


Immunohistochemical staining of paraffin-embedded Adenocarcinoma of Human endometrium tissue using anti-PTPN22 mouse monoclonal antibody. (Heat-induced epitope retrieval by 1mM EDTA in 10mM Tris buffer (pH8.5) at 120°C for 3min, [TA810177]) (1:1000)

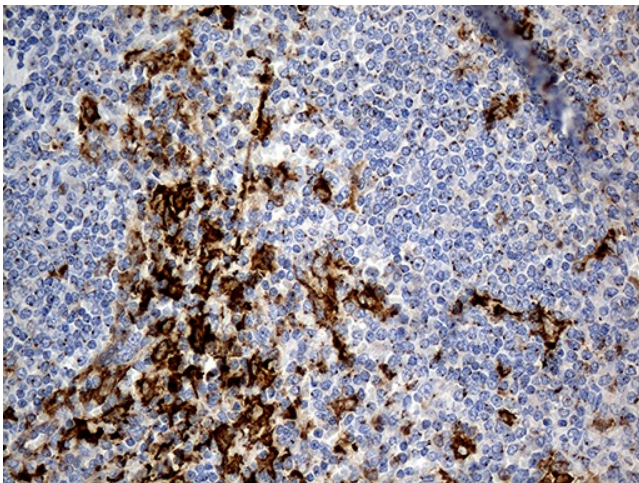




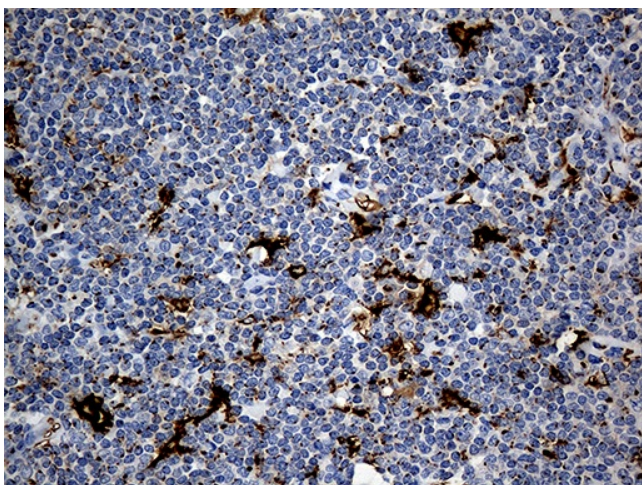
Immunohistochemical staining of paraffin-embedded Human prostate tissue within the normal limits using anti-PTPN22 mouse monoclonal antibody. (Heat-induced epitope retrieval by 1mM EDTA in 10mM Tris buffer (pH8.5) at 120°C for 3min, [TA810177]) (1:1000)



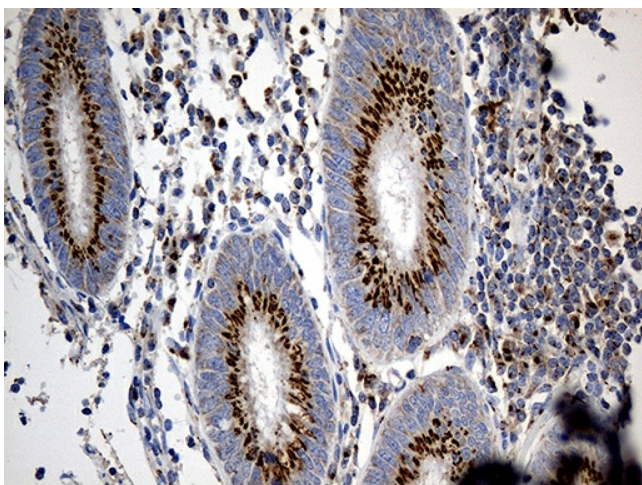
Immunohistochemical staining of paraffin-embedded Carcinoma of Human prostate tissue using anti-PTPN22 mouse monoclonal antibody. (Heat-induced epitope retrieval by 1mM EDTA in 10mM Tris buffer (pH8.5) at 120°C for 3min, [TA810177]) (1:1000)



Immunohistochemical staining of paraffin-embedded Human lymph node tissue within the normal limits using anti-PTPN22 mouse monoclonal antibody. (Heat-induced epitope retrieval by 1mM EDTA in 10mM Tris buffer (pH8.5) at 120°C for 3min, [TA810177]) (1:1000)



Immunohistochemical staining of paraffin-embedded Human Lymphoma tissue using anti-PTPN22 mouse monoclonal antibody. (Heat-induced epitope retrieval by 1mM EDTA in 10mM Tris buffer (pH8.5) at 120°C for 3min, [TA810177]) (1:1000)



Immunohistochemical staining of paraffin-embedded Human appendix tissue within the normal limits using anti-PTPN22 mouse monoclonal antibody. (Heat-induced epitope retrieval by 1mM EDTA in 10mM Tris buffer (pH8.5) at 120°C for 3min, [TA810177]) (1:1000)