

## Product datasheet for **TA810158M**

### Calcium binding protein P22 (CHP1) Mouse Monoclonal Antibody [Clone ID: OTI2E2]

#### Product data:

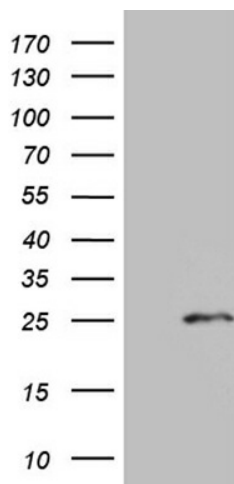
Product Type:	Primary Antibodies
Clone Name:	OTI2E2
Applications:	WB
Recommended Dilution:	WB 1:500
Reactivity:	Human, Mouse, Rat
Host:	Mouse
Isotype:	IgG2a
Clonality:	Monoclonal
Immunogen:	Full length human recombinant protein of human CHP (NP_009167) produced in HEK293T cell.
Formulation:	PBS (pH 7.3) containing 1% BSA, 50% glycerol and 0.02% sodium azide.
Concentration:	1 mg/ml
Purification:	Purified from mouse ascites fluids or tissue culture supernatant by affinity chromatography (protein A/G)
Conjugation:	Unconjugated
Storage:	Store at -20°C as received.
Stability:	Stable for 12 months from date of receipt.
Predicted Protein Size:	22.3 kDa
Gene Name:	calcineurin like EF-hand protein 1
Database Link:	<a href="#">NP_009167</a> <a href="#">Entrez Gene 56398 Mouse</a> <a href="#">Entrez Gene 64152 Rat</a> <a href="#">Entrez Gene 11261 Human</a> <a href="#">Q99653</a>
Background:	This gene encodes a phosphoprotein that binds to the Na <sup>+</sup> /H <sup>+</sup> exchanger NHE1. This protein serves as an essential cofactor which supports the physiological activity of NHE family members and may play a role in the mitogenic regulation of NHE1. The protein shares similarity with calcineurin B and calmodulin and it is also known to be an endogenous inhibitor of calcineurin activity. [provided by RefSeq, Jul 2008]


[View online »](#)

**Synonyms:** CHP; p22; p24; Sid470p; SLC9A1BP

**Protein Pathways:** Alzheimer's disease, Amyotrophic lateral sclerosis (ALS), Apoptosis, Axon guidance, B cell receptor signaling pathway, Calcium signaling pathway, Long-term potentiation, MAPK signaling pathway, Natural killer cell mediated cytotoxicity, Oocyte meiosis, T cell receptor signaling pathway, VEGF signaling pathway, Wnt signaling pathway

### Product images:



HEK293T cells were transfected with the pCMV6-ENTRY control (Left lane) or pCMV6-ENTRY CHP ([RC201928], Right lane) cDNA for 48 hrs and lysed. Equivalent amounts of cell lysates (5 ug per lane) were separated by SDS-PAGE and immunoblotted with anti-CHP (1:500). Positive lysates [LY402116] (100ug) and [LC402116] (20ug) can be purchased separately from OriGene.