

## Product datasheet for **TA810146**

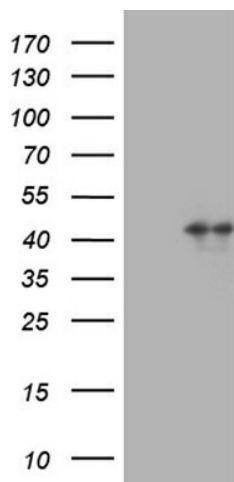
### TSEN34 Mouse Monoclonal Antibody [Clone ID: OTI6B3]

#### Product data:

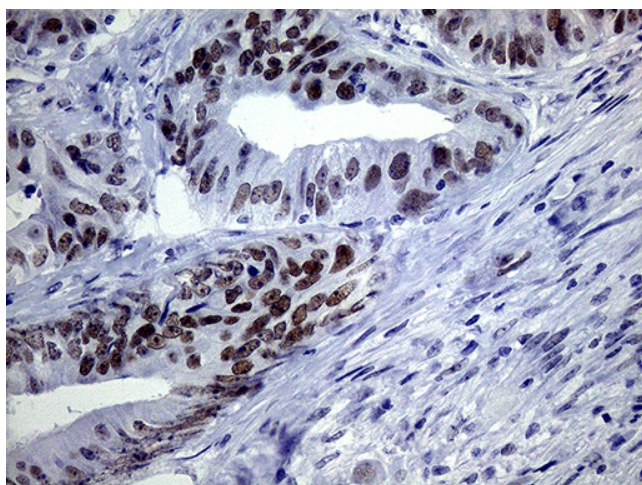
Product Type:	Primary Antibodies
Clone Name:	OTI6B3
Applications:	IHC, WB
Recommended Dilution:	WB 1:2000, IHC 1:150
Reactivity:	Human, Mouse, Rat
Host:	Mouse
Isotype:	IgG1
Clonality:	Monoclonal
Immunogen:	Full length human recombinant protein of human TSEN34(NP_076980) produced in E.coli.
Formulation:	PBS (pH 7.3) containing 1% BSA, 50% glycerol and 0.02% sodium azide.
Concentration:	1 mg/ml
Purification:	Purified from mouse ascites fluids or tissue culture supernatant by affinity chromatography (protein A/G)
Conjugation:	Unconjugated
Storage:	Store at -20°C as received.
Stability:	Stable for 12 months from date of receipt.
Predicted Protein Size:	33.5 kDa
Gene Name:	tRNA splicing endonuclease subunit 34
Database Link:	<a href="#">NP_076980</a> <a href="#">Entrez Gene 79042 Human</a> <a href="#">Q9BSV6</a>
Background:	This gene encodes a catalytic subunit of the tRNA splicing endonuclease, which catalyzes the removal of introns from precursor tRNAs. The endonuclease complex is also associated with a pre-mRNA 3-prime end processing factor. A mutation in this gene results in the neurological disorder pontocerebellar hypoplasia type 2. Multiple alternatively spliced variants, encoding the same protein, have been identified. [provided by RefSeq, Oct 2009]
Synonyms:	LENG5; PCH2C; SEN34; SEN34L



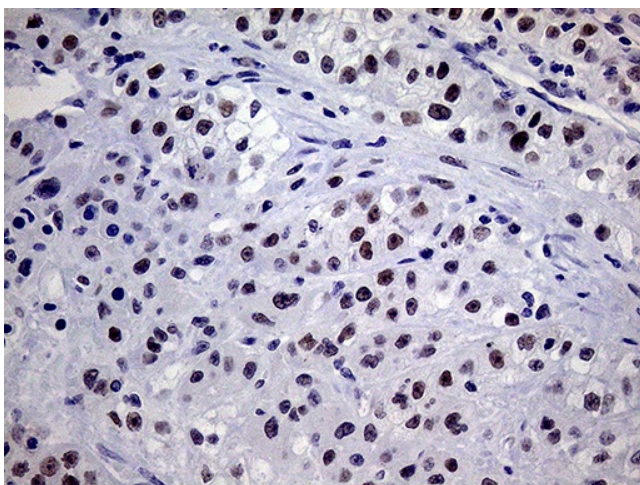
[View online »](#)

**Product images:**

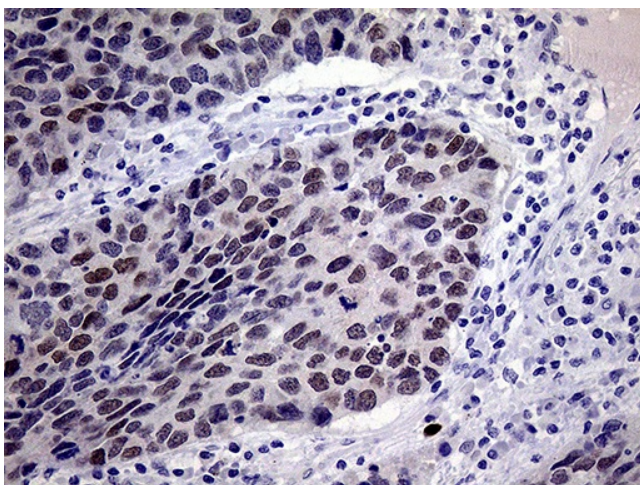
HEK293T cells were transfected with the pCMV6-ENTRY control (Cat# [PS100001], Left lane) or pCMV6-ENTRY TSEN34 (Cat# [RC200954], Right lane) cDNA for 48 hrs and lysed. Equivalent amounts of cell lysates (5 ug per lane) were separated by SDS-PAGE and immunoblotted with anti-TSEN34 (Cat# TA810146)(1:2000). Positive lysates [LY402979] (100ug) and [LC402979] (20ug) can be purchased separately from OriGene.



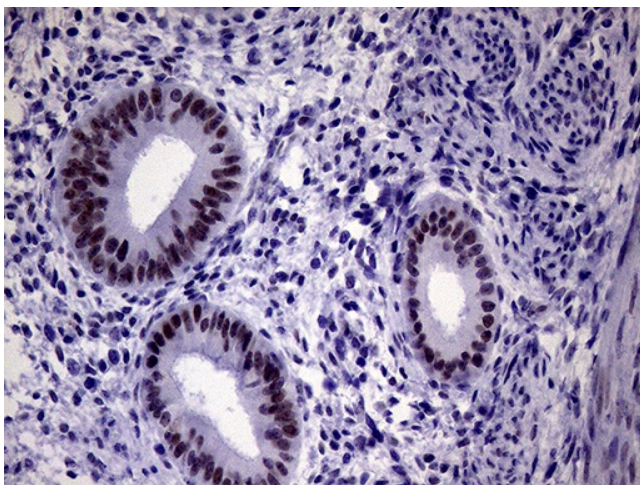
Immunohistochemical staining of paraffin-embedded Adenocarcinoma of Human colon tissue using anti-TSEN34 mouse monoclonal antibody. (Heat-induced epitope retrieval by 1mM EDTA in 10mM Tris buffer (pH8.5) at 120°C for 3min, TA810146) (1:150)



Immunohistochemical staining of paraffin-embedded Carcinoma of Human kidney tissue using anti-TSEN34 mouse monoclonal antibody. (Heat-induced epitope retrieval by 1mM EDTA in 10mM Tris buffer (pH8.5) at 120°C for 3min, TA810146) (1:150)



Immunohistochemical staining of paraffin-embedded Carcinoma of Human lung tissue using anti-TSEN34 mouse monoclonal antibody. (Heat-induced epitope retrieval by 1mM EDTA in 10mM Tris buffer (pH8.5) at 120°C for 3min, TA810146) (1:150)



Immunohistochemical staining of paraffin-embedded Human endometrium tissue within the normal limits using anti-TSEN34 mouse monoclonal antibody. (Heat-induced epitope retrieval by 1mM EDTA in 10mM Tris buffer (pH8.5) at 120°C for 3min, TA810146) (1:150)