

Product datasheet for TA810144

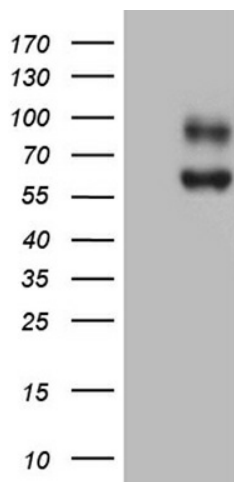
SLC39A5 Mouse Monoclonal Antibody [Clone ID: OTI2F2]

Product data:

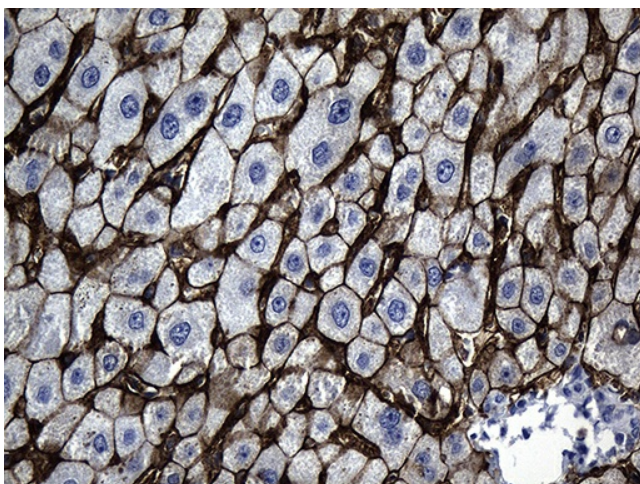
| | |
|-------------------------|-------------------------------------------------------------------------------------------------------------------------|
| Product Type: | Primary Antibodies |
| Clone Name: | OTI2F2 |
| Applications: | IHC, WB |
| Recommended Dilution: | WB 1:2000, IHC 1:500 |
| Reactivity: | Human |
| Host: | Mouse |
| Isotype: | IgG1 |
| Clonality: | Monoclonal |
| Immunogen: | Human recombinant protein fragment corresponding to amino acids 48-178 of human SLC39A5 (NP_775867) produced in E.coli. |
| Formulation: | PBS (PH 7.3) containing 1% BSA, 50% glycerol and 0.02% sodium azide. |
| Concentration: | 1 mg/ml |
| Purification: | Purified from mouse ascites fluids or tissue culture supernatant by affinity chromatography (protein A/G) |
| Storage: | Store at -20°C as received. |
| Stability: | Stable for 12 months from date of receipt. |
| Predicted Protein Size: | 56.1 kDa |
| Gene Name: | solute carrier family 39 member 5 |
| Database Link: | NP_775867 Entrez Gene 283375 Human |
| Synonyms: | LZT-Hs7; MYP24; ZIP5 |
| Protein Families: | Transmembrane |



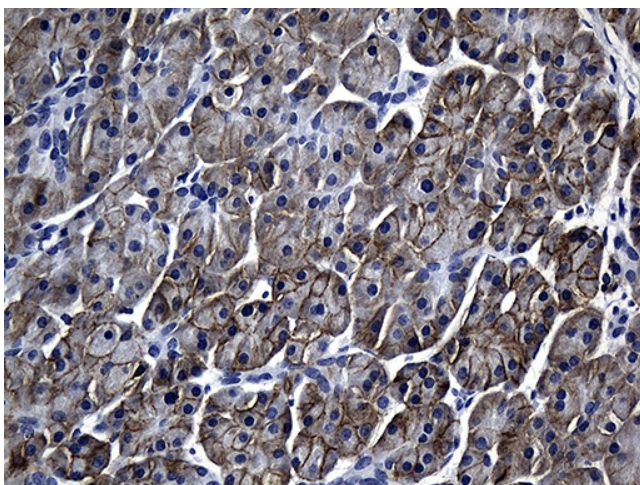
[View online »](#)

Product images:

HEK293T cells were transfected with the pCMV6-ENTRY control (Left lane) or pCMV6-ENTRY SLC39A5 ([RC206665], Right lane) cDNA for 48 hrs and lysed. Equivalent amounts of cell lysates (5 ug per lane) were separated by SDS-PAGE and immunoblotted with anti-SLC39A5 (1:2000). Positive lysates [LY406498] (100ug) and [LC406498] (20ug) can be purchased separately from OriGene.



Immunohistochemical staining of paraffin-embedded Human liver tissue within the normal limits using anti-SLC39A5 mouse monoclonal antibody. (Heat-induced epitope retrieval by 1mM EDTA in 10mM Tris buffer (pH8.5) at 120°C for 3min, TA810144) (1:500)



Immunohistochemical staining of paraffin-embedded Human pancreas tissue within the normal limits using anti-SLC39A5 mouse monoclonal antibody. (Heat-induced epitope retrieval by 1mM EDTA in 10mM Tris buffer (pH8.5) at 120°C for 3min, TA810144) (1:500)