

## Product datasheet for **TA810140AM**

### **DIMT1L (DIMT1) Mouse Monoclonal Antibody (Biotin conjugated) [Clone ID: OTI2E6]**

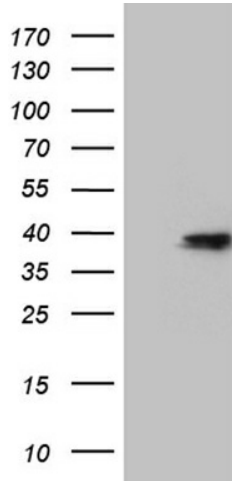
#### **Product data:**

Product Type:	Primary Antibodies
Clone Name:	OTI2E6
Applications:	WB
Recommended Dilution:	WB 1:2000
Reactivity:	Human, Mouse, Rat
Host:	Mouse
Isotype:	IgG1
Clonality:	Monoclonal
Immunogen:	Human recombinant protein fragment corresponding to amino acids 1-238 of human DIMT1L (NP_055288) produced in E.coli.
Formulation:	PBS (pH 7.3) containing 1% BSA, 50% glycerol and 0.02% sodium azide.
Concentration:	0.5 mg/ml
Purification:	Purified from mouse ascites fluids or tissue culture supernatant by affinity chromatography (protein A/G)
Conjugation:	Biotin
Storage:	Store at -20°C as received.
Stability:	Stable for 12 months from date of receipt.
Predicted Protein Size:	35.1 kDa
Gene Name:	DIM1 dimethyladenosine transferase 1 homolog
Database Link:	<a href="#">NP_055288</a> <a href="#">Entrez Gene 27292 Human</a> <a href="#">Q9UNQ2</a>
Synonyms:	DIM1; DIMT1L; HSA9761; HUSSY5
Protein Families:	Druggable Genome



[View online »](#)

## Product images:



HEK293T cells were transfected with the pCMV6-ENTRY control (Left lane) or pCMV6-ENTRY DIMT1L ([RC202326], Right lane) cDNA for 48 hrs and lysed. Equivalent amounts of cell lysates (5 ug per lane) were separated by SDS-PAGE and immunoblotted with anti-DIMT1L (1:2000). Positive lysates [LY415255] (100ug) and [LC415255] (20ug) can be purchased separately from OriGene.