

## Product datasheet for **TA810139AM**

### **SHARP2 (BHLHE40) Mouse Monoclonal Antibody (Biotin conjugated) [Clone ID: OTI4C4]**

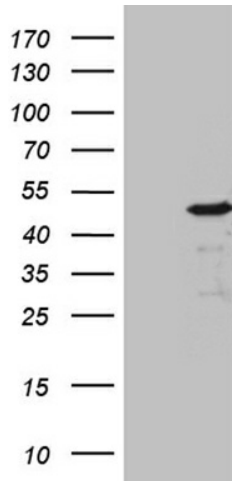
#### **Product data:**

<b>Product Type:</b>	Primary Antibodies
<b>Clone Name:</b>	OTI4C4
<b>Applications:</b>	WB
<b>Recommended Dilution:</b>	WB 1:500~2000
<b>Reactivity:</b>	Human, Mouse, Rat
<b>Host:</b>	Mouse
<b>Isotype:</b>	IgG1
<b>Clonality:</b>	Monoclonal
<b>Immunogen:</b>	Human recombinant protein fragment corresponding to amino acids 1-313 of human BHLHE40 (NP_003661) produced in E.coli.
<b>Formulation:</b>	PBS (pH 7.3) containing 1% BSA, 50% glycerol and 0.02% sodium azide.
<b>Concentration:</b>	0.5 mg/ml
<b>Purification:</b>	Purified from mouse ascites fluids or tissue culture supernatant by affinity chromatography (protein A/G)
<b>Conjugation:</b>	Biotin
<b>Storage:</b>	Store at -20°C as received.
<b>Stability:</b>	Stable for 12 months from date of receipt.
<b>Predicted Protein Size:</b>	45.3 kDa
<b>Gene Name:</b>	basic helix-loop-helix family member e40
<b>Database Link:</b>	<a href="#">NP_003661</a> <a href="#">Entrez Gene 20893 Mouse</a> <a href="#">Entrez Gene 79431 Rat</a> <a href="#">Entrez Gene 8553 Human</a> <a href="#">O14503</a>
<b>Synonyms:</b>	BHLHB2; DEC1; HLHB2; SHARP-2; STRA13; Stra14
<b>Protein Families:</b>	Transcription Factors
<b>Protein Pathways:</b>	Circadian rhythm - mammal

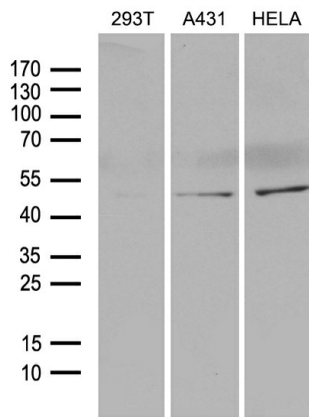


[View online »](#)

**Product images:**



HEK293T cells were transfected with the pCMV6-ENTRY control (Left lane) or pCMV6-ENTRY BHLHE40 ([RC210294], Right lane) cDNA for 48 hrs and lysed. Equivalent amounts of cell lysates (5 ug per lane) were separated by SDS-PAGE and immunoblotted with anti-BHLHE40 (1:2000). Positive lysates [LY418509] (100ug) and [LC418509] (20ug) can be purchased separately from OriGene.



Western blot analysis of extracts (35ug) from 3 different cell lines by using anti-BHLHE40 monoclonal antibody (1:500).