

## Product datasheet for **TA810136S**

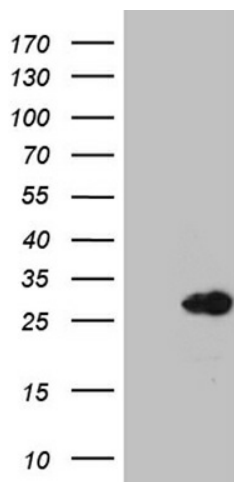
### MED28 Mouse Monoclonal Antibody [Clone ID: OTI6A3]

#### Product data:

Product Type:	Primary Antibodies
Clone Name:	OTI6A3
Applications:	WB
Recommended Dilution:	WB 1:2000
Reactivity:	Human, Mouse, Rat
Host:	Mouse
Isotype:	IgG1
Clonality:	Monoclonal
Immunogen:	Full length human recombinant protein of human MED28 (NP_079481) produced in E.coli.
Formulation:	PBS (pH 7.3) containing 1% BSA, 50% glycerol and 0.02% sodium azide.
Concentration:	1 mg/ml
Purification:	Purified from mouse ascites fluids or tissue culture supernatant by affinity chromatography (protein A/G)
Conjugation:	Unconjugated
Storage:	Store at -20°C as received.
Stability:	Stable for 12 months from date of receipt.
Predicted Protein Size:	19.3 kDa
Gene Name:	mediator complex subunit 28
Database Link:	<a href="#">NP_079481</a> <a href="#">Entrez Gene 66999 Mouse</a> <a href="#">Entrez Gene 80306 Human</a> <a href="#">Q9H204</a>
Synonyms:	1500003D12Rik; EG1; magicin
Protein Families:	Transcription Factors



[View online »](#)

**Product images:**

HEK293T cells were transfected with the pCMV6-ENTRY control (Left lane) or pCMV6-ENTRY MED28 [RC204304], Right lane) cDNA for 48 hrs and lysed. Equivalent amounts of cell lysates (5 ug per lane) were separated by SDS-PAGE and immunoblotted with anti-MED28 (1:2000). Positive lysates [LY410842] (100ug) and [LC410842] (20ug) can be purchased separately from OriGene.