

Product datasheet for **TA810135AM**

DIMT1L (DIMT1) Mouse Monoclonal Antibody (Biotin conjugated) [Clone ID: OTI6E7]

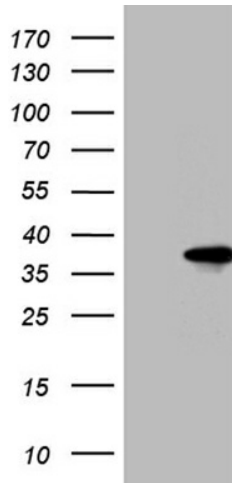
Product data:

Product Type:	Primary Antibodies
Clone Name:	OTI6E7
Applications:	WB
Recommended Dilution:	WB 1:500~2000
Reactivity:	Human, Mouse, Rat
Host:	Mouse
Isotype:	IgG2b
Clonality:	Monoclonal
Immunogen:	Human recombinant protein fragment corresponding to amino acids 1-238 of human DIMT1L (NP_055288) produced in E.coli.
Formulation:	PBS (pH 7.3) containing 1% BSA, 50% glycerol and 0.02% sodium azide.
Concentration:	0.5 mg/ml
Purification:	Purified from mouse ascites fluids or tissue culture supernatant by affinity chromatography (protein A/G)
Conjugation:	Biotin
Storage:	Store at -20°C as received.
Stability:	Stable for 12 months from date of receipt.
Predicted Protein Size:	35.1 kDa
Gene Name:	DIM1 dimethyladenosine transferase 1 homolog
Database Link:	NP_055288 Entrez Gene 27292 Human Q9UNQ2
Synonyms:	DIM1; DIMT1L; HSA9761; HUSSY5
Protein Families:	Druggable Genome

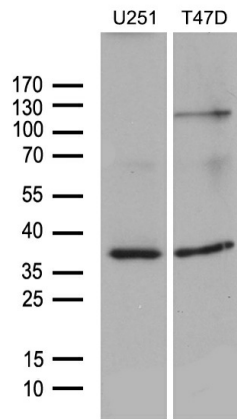


[View online »](#)

Product images:



HEK293T cells were transfected with the pCMV6-ENTRY control (Cat# [PS100001], Left lane) or pCMV6-ENTRY DIMT1L (Cat# [RC202326], Right lane) cDNA for 48 hrs and lysed. Equivalent amounts of cell lysates (5 ug per lane) were separated by SDS-PAGE and immunoblotted with anti-DIMT1L (Cat# [TA810135])(1:2000). Positive lysates [LY415255] (100ug) and [LC415255] (20ug) can be purchased separately from OriGene.



Western blot analysis of extracts (35ug) from 2 different cell lines by using anti-DIMT1L monoclonal antibody (1:500).