

Product datasheet for **TA810130AM**

SHARP2 (BHLHE40) Mouse Monoclonal Antibody (Biotin conjugated) [Clone ID: OTI2C9]

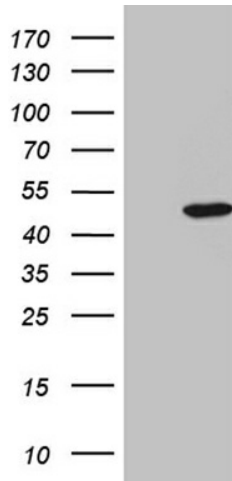
Product data:

Product Type:	Primary Antibodies
Clone Name:	OTI2C9
Applications:	WB
Recommended Dilution:	WB 1:2000
Reactivity:	Human, Mouse, Rat
Host:	Mouse
Isotype:	IgG1
Clonality:	Monoclonal
Immunogen:	Human recombinant protein fragment corresponding to amino acids 1-313 of human BHLHE40 (NP_003661) produced in E.coli.
Formulation:	PBS (pH 7.3) containing 1% BSA, 50% glycerol and 0.02% sodium azide.
Concentration:	0.5 mg/ml
Purification:	Purified from mouse ascites fluids or tissue culture supernatant by affinity chromatography (protein A/G)
Conjugation:	Biotin
Storage:	Store at -20°C as received.
Stability:	Stable for 12 months from date of receipt.
Predicted Protein Size:	45.3 kDa
Gene Name:	basic helix-loop-helix family member e40
Database Link:	NP_003661 Entrez Gene 20893 Mouse Entrez Gene 79431 Rat Entrez Gene 8553 Human O14503
Synonyms:	BHLHB2; DEC1; HLHB2; SHARP-2; STRA13; Stra14
Protein Families:	Transcription Factors
Protein Pathways:	Circadian rhythm - mammal



[View online »](#)

Product images:



HEK293T cells were transfected with the pCMV6-ENTRY control (Left lane) or pCMV6-ENTRY BHLHE40 ([RC210294], Right lane) cDNA for 48 hrs and lysed. Equivalent amounts of cell lysates (5 ug per lane) were separated by SDS-PAGE and immunoblotted with anti-BHLHE40 (1:2000). Positive lysates [LY418509] (100ug) and [LC418509] (20ug) can be purchased separately from OriGene.