

Product datasheet for **TA810112M**

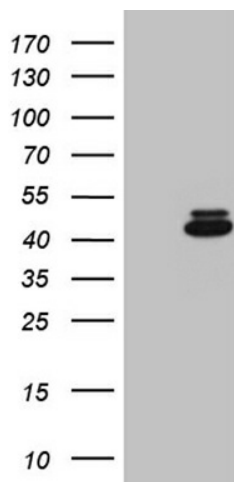
ZFYVE1 Mouse Monoclonal Antibody [Clone ID: OTI4H7]

Product data:

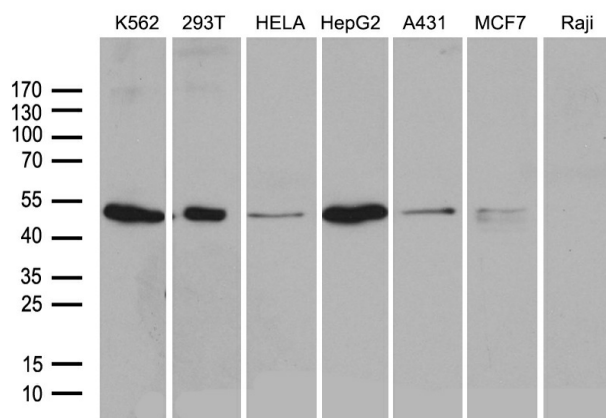
Product Type:	Primary Antibodies
Clone Name:	OTI4H7
Applications:	WB
Recommended Dilution:	WB 1:500~2000
Reactivity:	Human, Mouse, Rat
Host:	Mouse
Isotype:	IgG2a
Clonality:	Monoclonal
Immunogen:	Human recombinant protein fragment corresponding to amino acids 1-308 of human ZFYVE1(NP_848535) produced in E.coli.
Formulation:	PBS (pH 7.3) containing 1% BSA, 50% glycerol and 0.02% sodium azide.
Concentration:	1 mg/ml
Purification:	Purified from mouse ascites fluids or tissue culture supernatant by affinity chromatography (protein A/G)
Conjugation:	Unconjugated
Storage:	Store at -20°C as received.
Stability:	Stable for 12 months from date of receipt.
Predicted Protein Size:	40.1 kDa
Gene Name:	zinc finger FYVE-type containing 1
Database Link:	NP_848535 Entrez Gene 217695 Mouse Entrez Gene 299188 Rat Entrez Gene 53349 Human Q9HBF4
Synonyms:	DFCP1; PPP1R172; SR3; TAFF1; ZNFN2A1

[View online »](#)

Product images:



HEK293T cells were transfected with the pCMV6-ENTRY control (Left lane) or pCMV6-ENTRY ZFYVE1 [RC211403], Right lane) cDNA for 48 hrs and lysed. Equivalent amounts of cell lysates (5 ug per lane) were separated by SDS-PAGE and immunoblotted with anti-ZFYVE1 (1:2000). Positive lysates [LY405962] (100ug) and [LC405962] (20ug) can be purchased separately from OriGene.



Western blot analysis of extracts (35ug) from 7 different cell lines by using anti-ZFYVE1 monoclonal antibody (1:500).