

## Product datasheet for **TA810101AM**

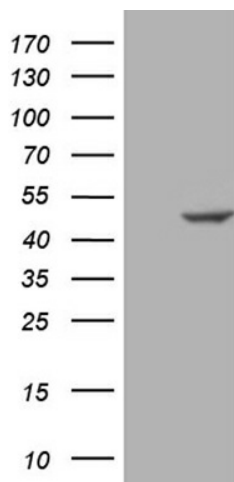
### **SUGT1 Mouse Monoclonal Antibody (Biotin conjugated) [Clone ID: OTI9A1]**

#### **Product data:**

Product Type:	Primary Antibodies
Clone Name:	OTI9A1
Applications:	WB
Recommended Dilution:	WB 1:500
Reactivity:	Human, Mouse, Rat
Host:	Mouse
Isotype:	IgG2a
Clonality:	Monoclonal
Immunogen:	Full length human recombinant protein of human SUGT1(NP_006695) produced in E.coli.
Formulation:	PBS (pH 7.3) containing 1% BSA, 50% glycerol and 0.02% sodium azide.
Concentration:	0.5 mg/ml
Purification:	Purified from mouse ascites fluids or tissue culture supernatant by affinity chromatography (protein A/G)
Conjugation:	Biotin
Storage:	Store at -20°C as received.
Stability:	Stable for 12 months from date of receipt.
Predicted Protein Size:	37.6 kDa
Gene Name:	SGT1 homolog, MIS12 kinetochore complex assembly cochaperone
Database Link:	<a href="#">NP_006695</a> <a href="#">Entrez Gene 67955 Mouse</a> <a href="#">Entrez Gene 290408 Rat</a> <a href="#">Entrez Gene 10910 Human</a> <a href="#">Q9Y2Z0</a>
Background:	This gene is homologous to the yeast gene SGT1, which encodes a protein involved in kinetochore function and required for the G1/S and G2/M transitions. Complementation studies suggest that the human protein has similar functions. Two transcript variants encoding different isoforms have been found for this gene. [provided by RefSeq, Aug 2008]
Synonyms:	SGT1
Protein Pathways:	NOD-like receptor signaling pathway



[View online »](#)

**Product images:**

HEK293T cells were transfected with the pCMV6-ENTRY control (Left lane) or pCMV6-ENTRY SUGT1 ([RC201676], Right lane) cDNA for 48 hrs and lysed. Equivalent amounts of cell lysates (5 ug per lane) were separated by SDS-PAGE and immunoblotted with anti-SUGT1 (1:500). Positive lysates [LY416475] (100ug) and [LC416475] (20ug) can be purchased separately from OriGene.