

Product datasheet for **TA810098S**

SUGT1 Mouse Monoclonal Antibody [Clone ID: OTI10A9]

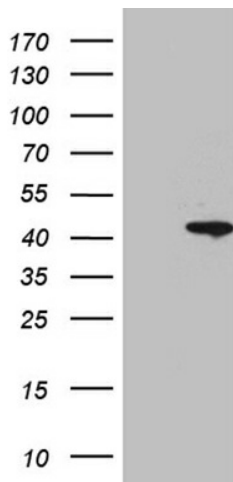
Product data:

Product Type:	Primary Antibodies
Clone Name:	OTI10A9
Applications:	WB
Recommended Dilution:	WB 1:500~2000
Reactivity:	Human, Mouse, Rat
Host:	Mouse
Isotype:	IgG1
Clonality:	Monoclonal
Immunogen:	Full length human recombinant protein of human SUGT1(NP_006695) produced in E.coli.
Formulation:	PBS (pH 7.3) containing 1% BSA, 50% glycerol and 0.02% sodium azide.
Concentration:	1 mg/ml
Purification:	Purified from mouse ascites fluids or tissue culture supernatant by affinity chromatography (protein A/G)
Conjugation:	Unconjugated
Storage:	Store at -20°C as received.
Stability:	Stable for 12 months from date of receipt.
Predicted Protein Size:	37.6 kDa
Gene Name:	SGT1 homolog, MIS12 kinetochore complex assembly cochaperone
Database Link:	NP_006695 Entrez Gene 67955 Mouse Entrez Gene 290408 Rat Entrez Gene 10910 Human Q9Y2Z0
Background:	This gene encodes a highly conserved nuclear protein involved in kinetochore function and required for the G1/S and G2/M transitions. This protein interacts with heat shock protein 90. Alternative splicing results in multiple transcript variants. Pseudogenes for this gene have been defined on several different chromosomes. [provided by RefSeq, Mar 2016]
Synonyms:	SGT1
Protein Pathways:	NOD-like receptor signaling pathway

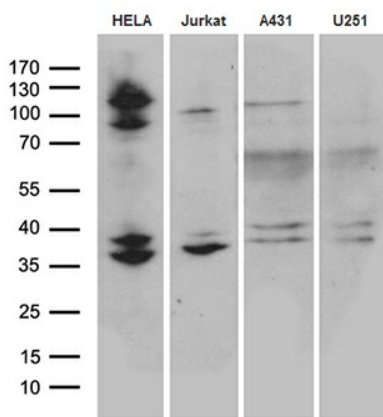


[View online »](#)

Product images:



HEK293T cells were transfected with the pCMV6-ENTRY control (Left lane) or pCMV6-ENTRY SUGT1 ([RC201676], Right lane) cDNA for 48 hrs and lysed. Equivalent amounts of cell lysates (5 ug per lane) were separated by SDS-PAGE and immunoblotted with anti-SUGT1. Positive lysates [LY416475] (100ug) and [LC416475] (20ug) can be purchased separately from OriGene.



Western blot analysis of extracts (35ug) from 4 cell lines by using anti-SUGT1 monoclonal antibody (1:500).