

Product datasheet for **TA810071AM**

HACE1 Mouse Monoclonal Antibody (Biotin conjugated) [Clone ID: OTI6H8]

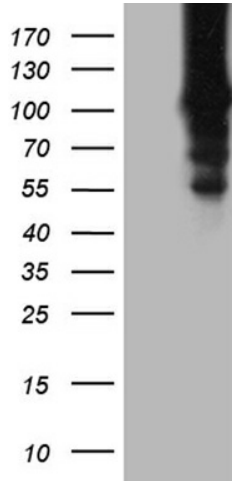
Product data:

Product Type:	Primary Antibodies
Clone Name:	OTI6H8
Applications:	WB
Recommended Dilution:	WB 1:500~2000
Reactivity:	Human, Mouse, Rat
Host:	Mouse
Isotype:	IgG2b
Clonality:	Monoclonal
Immunogen:	Full length human recombinant protein of human HACE1 (NP_065822) produced in HEK293T cell.
Formulation:	PBS (pH 7.3) containing 1% BSA, 50% glycerol and 0.02% sodium azide.
Concentration:	0.5 mg/ml
Purification:	Purified from mouse ascites fluids or tissue culture supernatant by affinity chromatography (protein A/G)
Conjugation:	Biotin
Storage:	Store at -20°C as received.
Stability:	Stable for 12 months from date of receipt.
Predicted Protein Size:	102.2 kDa
Gene Name:	HECT domain and ankyrin repeat containing E3 ubiquitin protein ligase 1
Database Link:	NP_065822 Entrez Gene 209462 Mouse Entrez Gene 361866 Rat Entrez Gene 57531 Human Q8IYU2
Synonyms:	E3 ubiquitin protein ligase 1; HECT domain and ankyrin repeat containing
Protein Families:	Druggable Genome

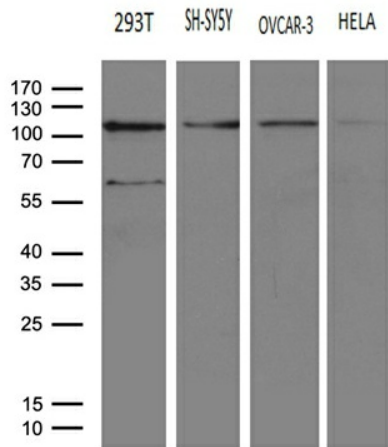


[View online »](#)

Product images:



HEK293T cells were transfected with the pCMV6-ENTRY control (Left lane) or pCMV6-ENTRY HACE1 ([RC205602], Right lane) cDNA for 48 hrs and lysed. Equivalent amounts of cell lysates (5 ug per lane) were separated by SDS-PAGE and immunoblotted with anti-HACE1 (1:2000). Positive lysates [LY412326] (100ug) and [LC412326] (20ug) can be purchased separately from OriGene.



Western blot analysis of extracts (35ug) from 4 different cell lines by using anti-HACE1 monoclonal antibody (1:500).