

## Product datasheet for **TA810065S**

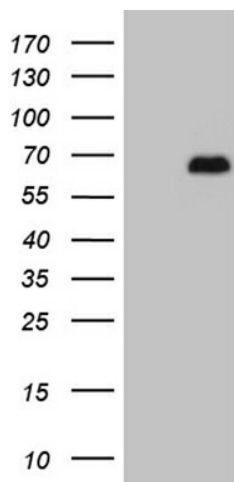
### **KIAA0652 (ATG13) Mouse Monoclonal Antibody [Clone ID: OTI1B1]**

#### **Product data:**

Product Type:	Primary Antibodies
Clone Name:	OTI1B1
Applications:	WB
Recommended Dilution:	WB 1:2000
Reactivity:	Human, Mouse, Rat
Host:	Mouse
Isotype:	IgG1
Clonality:	Monoclonal
Immunogen:	Human recombinant protein fragment corresponding to amino acids 285-364 of human ATG13 (NP_055556) produced in E.coli.
Formulation:	PBS (pH 7.3) containing 1% BSA, 50% glycerol and 0.02% sodium azide.
Concentration:	1 mg/ml
Purification:	Purified from mouse ascites fluids or tissue culture supernatant by affinity chromatography (protein A/G)
Conjugation:	Unconjugated
Storage:	Store at -20°C as received.
Stability:	Stable for 12 months from date of receipt.
Predicted Protein Size:	52.6 kDa
Gene Name:	autophagy related 13
Database Link:	<a href="#">NP_055556</a> <a href="#">Entrez Gene 51897 Mouse</a> <a href="#">Entrez Gene 362164 Rat</a> <a href="#">Entrez Gene 9776 Human</a> <a href="#">O75143</a>
Synonyms:	KIAA0652; PARATARG8



[View online »](#)

**Product images:**

HEK293T cells were transfected with the pCMV6-ENTRY control (Cat# [PS100001], Left lane) or pCMV6-ENTRY ATG13 (Cat# [RC201825], Right lane) cDNA for 48 hrs and lysed. Equivalent amounts of cell lysates (5 ug per lane) were separated by SDS-PAGE and immunoblotted with anti-ATG13 (Cat# [TA810065])(1:2000). Positive lysates [LY415059] (100ug) and [LC415059] (20ug) can be purchased separately from OriGene.