

Product datasheet for **TA810065BM**

KIAA0652 (ATG13) Mouse Monoclonal Antibody (HRP conjugated) [Clone ID: OTI1B1]

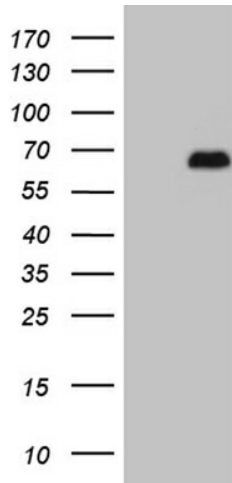
Product data:

Product Type:	Primary Antibodies
Clone Name:	OTI1B1
Applications:	WB
Recommended Dilution:	WB 1:2000
Reactivity:	Human, Mouse, Rat
Host:	Mouse
Isotype:	IgG1
Clonality:	Monoclonal
Immunogen:	Human recombinant protein fragment corresponding to amino acids 285-364 of human ATG13 (NP_055556) produced in E.coli.
Formulation:	PBS (pH 7.3) containing 1% BSA, 50% glycerol.
Concentration:	0.5 mg/ml
Purification:	Purified from mouse ascites fluids or tissue culture supernatant by affinity chromatography (protein A/G)
Conjugation:	HRP
Storage:	Store at -20°C as received.
Stability:	Stable for 12 months from date of receipt.
Predicted Protein Size:	52.6 kDa
Gene Name:	autophagy related 13
Database Link:	NP_055556 Entrez Gene 51897 Mouse Entrez Gene 362164 Rat Entrez Gene 9776 Human O75143
Synonyms:	KIAA0652; PARATARG8



[View online »](#)

Product images:



HEK293T cells were transfected with the pCMV6-ENTRY control (Cat# [PS100001], Left lane) or pCMV6-ENTRY ATG13 (Cat# [RC201825], Right lane) cDNA for 48 hrs and lysed. Equivalent amounts of cell lysates (5 ug per lane) were separated by SDS-PAGE and immunoblotted with anti-ATG13 (Cat# [TA810065])(1:2000). Positive lysates [LY415059] (100ug) and [LC415059] (20ug) can be purchased separately from OriGene.