

## Product datasheet for **TA810065AM**

### **KIAA0652 (ATG13) Mouse Monoclonal Antibody (Biotin conjugated) [Clone ID: OTI1B1]**

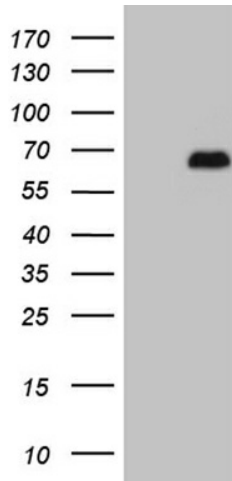
#### **Product data:**

<b>Product Type:</b>	Primary Antibodies
<b>Clone Name:</b>	OTI1B1
<b>Applications:</b>	WB
<b>Recommended Dilution:</b>	WB 1:2000
<b>Reactivity:</b>	Human, Mouse, Rat
<b>Host:</b>	Mouse
<b>Isotype:</b>	IgG1
<b>Clonality:</b>	Monoclonal
<b>Immunogen:</b>	Human recombinant protein fragment corresponding to amino acids 285-364 of human ATG13 (NP_055556) produced in E.coli.
<b>Formulation:</b>	PBS (pH 7.3) containing 1% BSA, 50% glycerol and 0.02% sodium azide.
<b>Concentration:</b>	0.5 mg/ml
<b>Purification:</b>	Purified from mouse ascites fluids or tissue culture supernatant by affinity chromatography (protein A/G)
<b>Conjugation:</b>	Biotin
<b>Storage:</b>	Store at -20°C as received.
<b>Stability:</b>	Stable for 12 months from date of receipt.
<b>Predicted Protein Size:</b>	52.6 kDa
<b>Gene Name:</b>	autophagy related 13
<b>Database Link:</b>	<a href="#">NP_055556</a> <a href="#">Entrez Gene 51897 Mouse</a> <a href="#">Entrez Gene 362164 Rat</a> <a href="#">Entrez Gene 9776 Human</a> <a href="#">O75143</a>
<b>Synonyms:</b>	KIAA0652; PARATARG8



[View online »](#)

## Product images:



HEK293T cells were transfected with the pCMV6-ENTRY control (Cat# [PS100001], Left lane) or pCMV6-ENTRY ATG13 (Cat# [RC201825], Right lane) cDNA for 48 hrs and lysed. Equivalent amounts of cell lysates (5 ug per lane) were separated by SDS-PAGE and immunoblotted with anti-ATG13 (Cat# [TA810065])(1:2000). Positive lysates [LY415059] (100ug) and [LC415059] (20ug) can be purchased separately from OriGene.