

Product datasheet for **TA810063S**

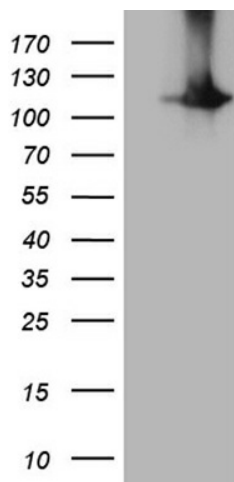
HACE1 Mouse Monoclonal Antibody [Clone ID: OTI4F10]

Product data:

Product Type:	Primary Antibodies
Clone Name:	OTI4F10
Applications:	WB
Recommended Dilution:	WB 1:2000
Reactivity:	Human, Mouse, Rat
Host:	Mouse
Isotype:	IgG1
Clonality:	Monoclonal
Immunogen:	Full length human recombinant protein of human HACE1 (NP_065822) produced in HEK293T cell.
Formulation:	PBS (pH 7.3) containing 1% BSA, 50% glycerol and 0.02% sodium azide.
Concentration:	1 mg/ml
Purification:	Purified from mouse ascites fluids or tissue culture supernatant by affinity chromatography (protein A/G)
Conjugation:	Unconjugated
Storage:	Store at -20°C as received.
Stability:	Stable for 12 months from date of receipt.
Predicted Protein Size:	102.2 kDa
Gene Name:	HECT domain and ankyrin repeat containing E3 ubiquitin protein ligase 1
Database Link:	NP_065822 Entrez Gene 209462 Mouse Entrez Gene 361866 Rat Entrez Gene 57531 Human Q8IYU2
Synonyms:	E3 ubiquitin protein ligase 1; HECT domain and ankyrin repeat containing
Protein Families:	Druggable Genome



[View online »](#)

Product images:

HEK293T cells were transfected with the pCMV6-ENTRY control (Left lane) or pCMV6-ENTRY HACE1 ([RC205602], Right lane) cDNA for 48 hrs and lysed. Equivalent amounts of cell lysates (5 ug per lane) were separated by SDS-PAGE and immunoblotted with anti-HACE1 (1:2000). Positive lysates [LY412326] (100ug) and [LC412326] (20ug) can be purchased separately from OriGene.