

## Product datasheet for **TA810055BM**

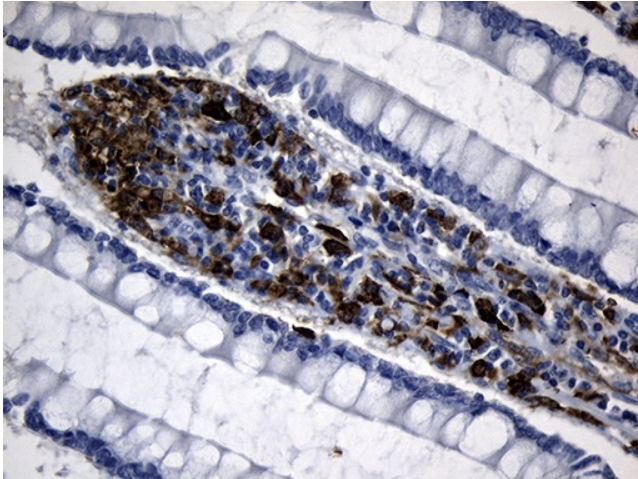
### CD299 (CLEC4M) Mouse Monoclonal Antibody (HRP conjugated) [Clone ID: OTI10C3]

#### Product data:

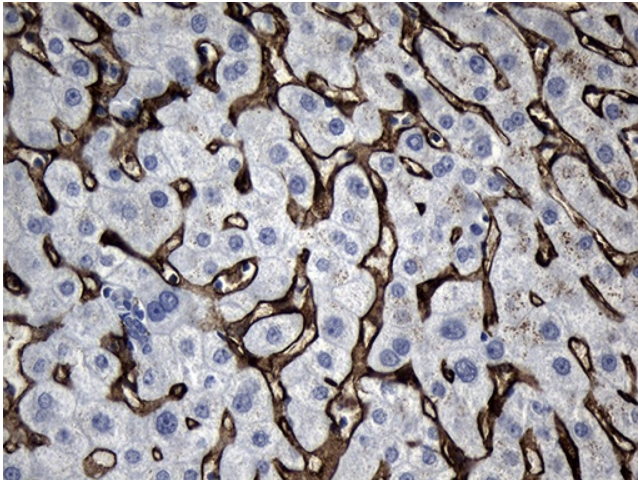
Product Type:	Primary Antibodies
Clone Name:	OTI10C3
Applications:	IHC
Recommended Dilution:	IHC 1:150
Reactivity:	Human
Host:	Mouse
Isotype:	IgG1
Clonality:	Monoclonal
Immunogen:	Human recombinant protein fragment corresponding to amino acids 74-329 of human CLEC4M (NP_055072) produced in E.coli.
Formulation:	PBS (pH 7.3) containing 1% BSA, 50% glycerol.
Concentration:	0.5 mg/ml
Purification:	Purified from mouse ascites fluids or tissue culture supernatant by affinity chromatography (protein A/G)
Conjugation:	HRP
Storage:	Store at -20°C as received.
Stability:	Stable for 12 months from date of receipt.
Predicted Protein Size:	45.2 kDa
Gene Name:	C-type lectin domain family 4 member M
Database Link:	<a href="#">NP_055072</a> <a href="#">Entrez Gene 10332 Human</a> <a href="#">Q9H2X3</a>
Synonyms:	CD209L; CD299; DC-SIGN2; DC-SIGNR; DCSIGNR; HP10347; L-SIGN; LSIGN
Protein Families:	Druggable Genome, Transmembrane



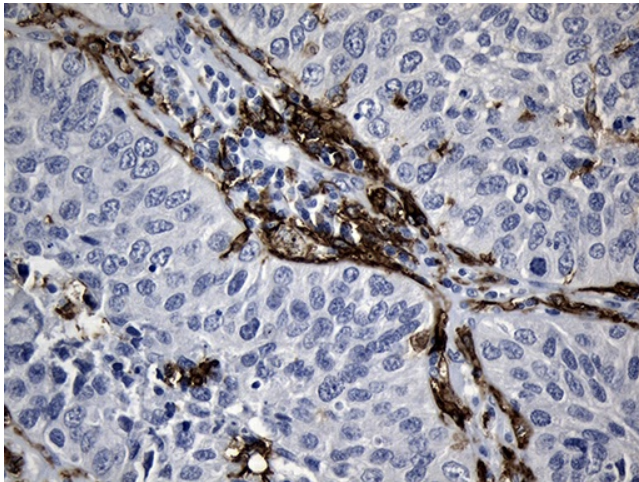
[View online »](#)

**Product images:**

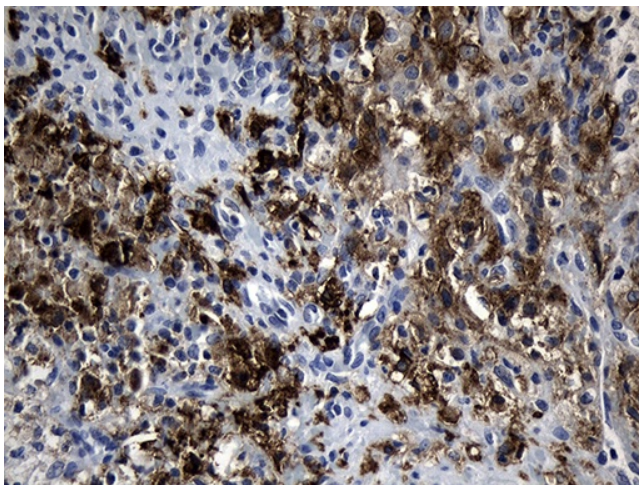
Immunohistochemical staining of paraffin-embedded Human colon tissue within the normal limits using anti-CLEC4M mouse monoclonal antibody. (Heat-induced epitope retrieval by 1mM EDTA in 10mM Tris buffer (pH8.5) at 120°C for 3min, [TA810055]) (1:150)



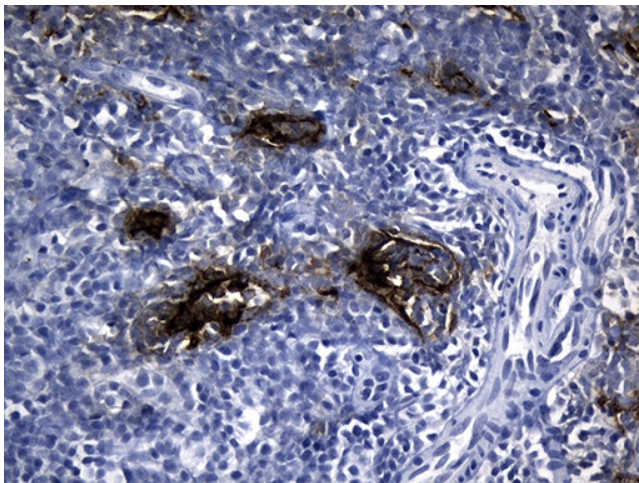
Immunohistochemical staining of paraffin-embedded Human liver tissue within the normal limits using anti-CLEC4M mouse monoclonal antibody. (Heat-induced epitope retrieval by 1mM EDTA in 10mM Tris buffer (pH8.5) at 120°C for 3min, [TA810055]) (1:150)



Immunohistochemical staining of paraffin-embedded Carcinoma of Human lung tissue using anti-CLEC4M mouse monoclonal antibody. (Heat-induced epitope retrieval by 1mM EDTA in 10mM Tris buffer (pH8.5) at 120°C for 3min, [TA810055]) (1:150)

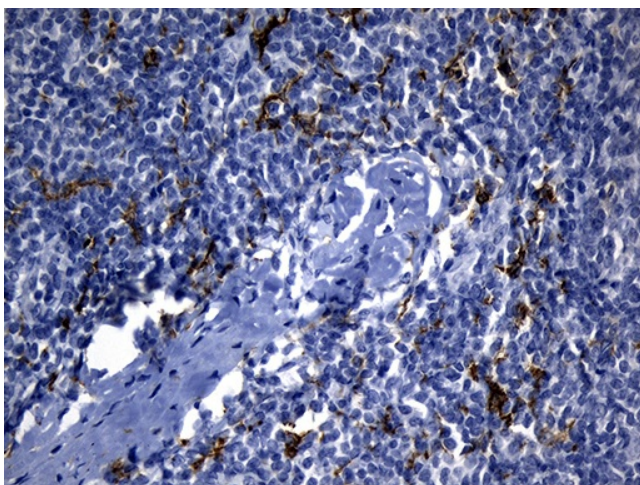


Immunohistochemical staining of paraffin-embedded Human Ovary tissue within the normal limits using anti-CLEC4M mouse monoclonal antibody. (Heat-induced epitope retrieval by 1mM EDTA in 10mM Tris buffer (pH8.5) at 120°C for 3min, [TA810055]) (1:150)



Immunohistochemical staining of paraffin-embedded Human lymph node tissue within the normal limits using anti-CLEC4M mouse monoclonal antibody. (Heat-induced epitope retrieval by 1mM EDTA in 10mM Tris buffer (pH8.5) at 120°C for 3min, [TA810055]) (1:150)





Immunohistochemical staining of paraffin-embedded Human tonsil within the normal limits using anti-CLEC4M mouse monoclonal antibody. (Heat-induced epitope retrieval by 1mM EDTA in 10mM Tris buffer (pH8.5) at 120°C for 3min, [TA810055]) (1:150)