

## Product datasheet for **TA810049S**

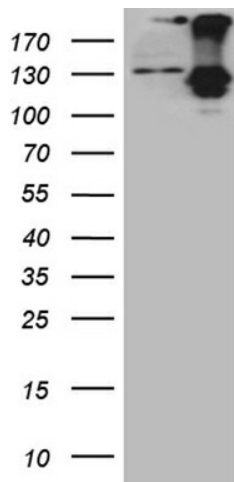
### ROR2 Mouse Monoclonal Antibody [Clone ID: OTI2G1]

#### Product data:

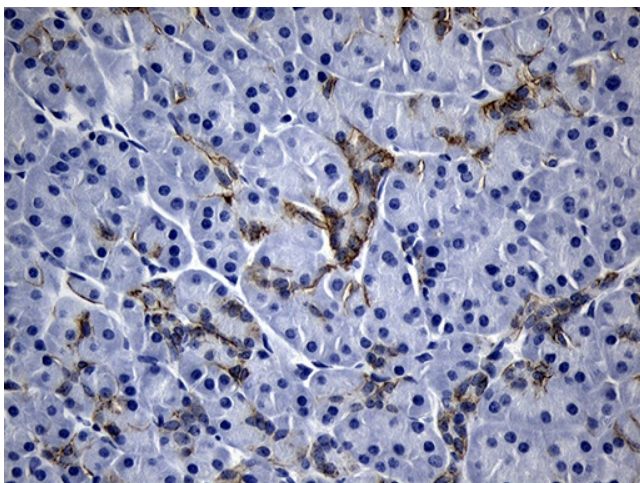
Product Type:	Primary Antibodies
Clone Name:	OTI2G1
Applications:	IHC, WB
Recommended Dilution:	WB 1:500, IHC 1:250
Reactivity:	Human, Mouse, Rat
Host:	Mouse
Isotype:	IgG1
Clonality:	Monoclonal
Immunogen:	Human recombinant protein fragment corresponding to amino acids 796-927 of human ROR2(NP_004551) produced in E.coli.
Formulation:	PBS (pH 7.3) containing 1% BSA, 50% glycerol and 0.02% sodium azide.
Concentration:	1 mg/ml
Purification:	Purified from mouse ascites fluids or tissue culture supernatant by affinity chromatography (protein A/G)
Conjugation:	Unconjugated
Storage:	Store at -20°C as received.
Stability:	Stable for 12 months from date of receipt.
Predicted Protein Size:	104.74 kDa
Gene Name:	receptor tyrosine kinase like orphan receptor 2
Database Link:	<a href="#">NP_004551</a> <a href="#">Entrez Gene 26564 Mouse</a> <a href="#">Entrez Gene 306782 Rat</a> <a href="#">Entrez Gene 4920 Human</a> <a href="#">Q01974</a>
Synonyms:	BDB; BDB1; NTRKR2
Protein Families:	Druggable Genome, Protein Kinase, Transmembrane



[View online »](#)

**Product images:**

HEK293T cells were transfected with the pCMV6-ENTRY control (Left lane) or pCMV6-ENTRY ROR2 ([RC215640], Right lane) cDNA for 48 hrs and lysed. Equivalent amounts of cell lysates (5 ug per lane) were separated by SDS-PAGE and immunoblotted with anti-ROR2 (1:500). Positive lysates [LY417906] (100ug) and [LC417906] (20ug) can be purchased separately from OriGene.



Immunohistochemical staining of paraffin-embedded Human pancreas tissue within the normal limits using anti-ROR2 mouse monoclonal antibody. (Heat-induced epitope retrieval by 1mM EDTA in 10mM Tris buffer (pH8.5) at 120°C for 3min, [TA810049]) (1:250)