

## Product datasheet for **TA810040BM**

### **ESE1 (ELF3) Mouse Monoclonal Antibody (HRP conjugated) [Clone ID: OTI2G6]**

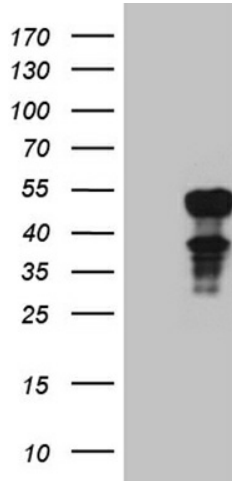
#### **Product data:**

Product Type:	Primary Antibodies
Clone Name:	OTI2G6
Applications:	IHC, WB
Recommended Dilution:	WB 1:500~2000, IHC 1:500
Reactivity:	Human, Mouse, Rat
Host:	Mouse
Isotype:	IgG2a
Clonality:	Monoclonal
Immunogen:	Human recombinant protein fragment corresponding to amino acids 175-286 of human ELF3(NP_001107781) produced in E.coli.
Formulation:	PBS (pH 7.3) containing 1% BSA, 50% glycerol.
Concentration:	0.5 mg/ml
Purification:	Purified from mouse ascites fluids or tissue culture supernatant by affinity chromatography (protein A/G)
Conjugation:	HRP
Storage:	Store at -20°C as received.
Stability:	Stable for 12 months from date of receipt.
Predicted Protein Size:	41.3 kDa
Gene Name:	E74 like ETS transcription factor 3
Database Link:	<a href="#">NP_001107781</a> <a href="#">Entrez Gene 13710 Mouse</a> <a href="#">Entrez Gene 304815 Rat</a> <a href="#">Entrez Gene 1999 Human</a> <a href="#">P78545</a>
Synonyms:	EPR-1; ERT; ESE-1; ESX
Protein Families:	Transcription Factors

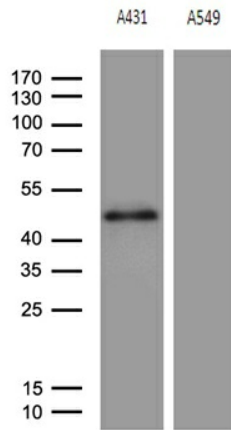


[View online »](#)

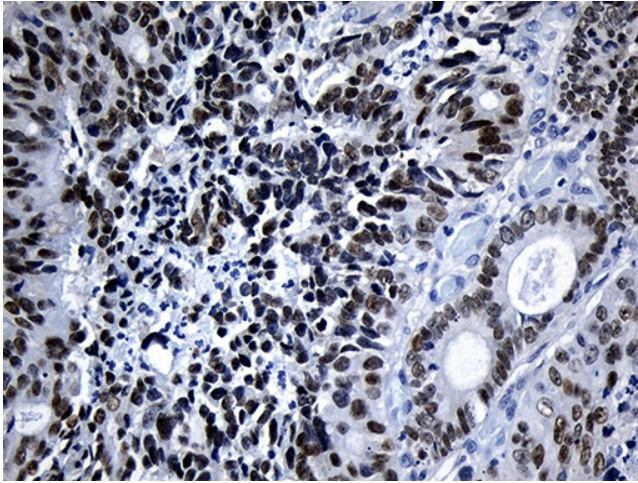
**Product images:**



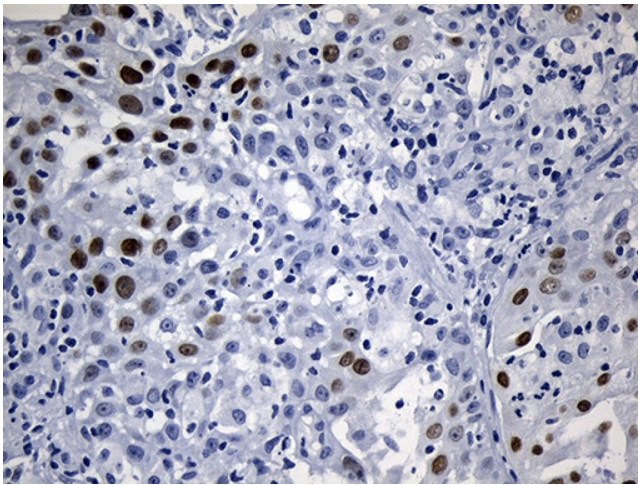
HEK293T cells were transfected with the pCMV6-ENTRY control (Left lane) or pCMV6-ENTRY ELF3 ([RC225564], Right lane) cDNA for 48 hrs and lysed. Equivalent amounts of cell lysates (5 ug per lane) were separated by SDS-PAGE and immunoblotted with anti-ELF3 (1:2000). Positive lysates [LY426477] (100ug) and [LC426477] (20ug) can be purchased separately from OriGene.



Western blot analysis of extracts (35ug) from 2 different cell lines by using anti-ELF3 monoclonal antibody (1:500).



Immunohistochemical staining of paraffin-embedded Adenocarcinoma of Human colon tissue using anti-ELF3 mouse monoclonal antibody. (Heat-induced epitope retrieval by 1mM EDTA in 10mM Tris buffer (pH8.5) at 120°C for 3min, [TA810040]) (1:500)



Immunohistochemical staining of paraffin-embedded Carcinoma of Human bladder tissue using anti-ELF3 mouse monoclonal antibody. (Heat-induced epitope retrieval by 1mM EDTA in 10mM Tris buffer (pH8.5) at 120°C for 3min, [TA810040]) (1:500)