

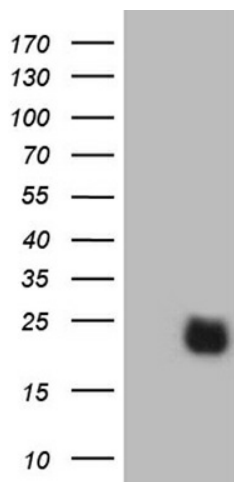
## Product datasheet for **TA810026M**

### **RHOH Mouse Monoclonal Antibody [Clone ID: OTI8C7]**

#### **Product data:**

Product Type:	Primary Antibodies
Clone Name:	OTI8C7
Applications:	WB
Recommended Dilution:	WB 1:2000
Reactivity:	Human, Mouse, Rat
Host:	Mouse
Isotype:	IgG1
Clonality:	Monoclonal
Immunogen:	Human recombinant protein fragment corresponding to amino acids 97-190 of human RHOH(NP_004301) produced in E.coli.
Formulation:	PBS (pH 7.3) containing 1% BSA, 50% glycerol and 0.02% sodium azide.
Concentration:	1 mg/ml
Purification:	Purified from mouse ascites fluids or tissue culture supernatant by affinity chromatography (protein A/G)
Conjugation:	Unconjugated
Storage:	Store at -20°C as received.
Stability:	Stable for 12 months from date of receipt.
Predicted Protein Size:	21.1 kDa
Gene Name:	ras homolog family member H
Database Link:	<a href="#">NP_004301</a> <a href="#">Entrez Gene 74734 Mouse</a> <a href="#">Entrez Gene 305341 Rat</a> <a href="#">Entrez Gene 399 Human</a> <a href="#">Q15669</a>
Synonyms:	ARHH; TTF
Protein Families:	Transcription Factors
Protein Pathways:	Leukocyte transendothelial migration

[View online »](#)

**Product images:**


HEK293T cells were transfected with the pCMV6-ENTRY control (Left lane) or pCMV6-ENTRY RHOH ([RC204324], Right lane) cDNA for 48 hrs and lysed. Equivalent amounts of cell lysates (5 ug per lane) were separated by SDS-PAGE and immunoblotted with anti-RHOH (1:2000). Positive lysates [LY401372] (100ug) and [LC401372] (20ug) can be purchased separately from OriGene.