

Product datasheet for **TA810026AM**

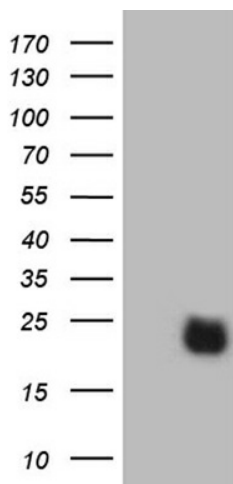
RHOH Mouse Monoclonal Antibody (Biotin conjugated) [Clone ID: OTI8C7]

Product data:

Product Type:	Primary Antibodies
Clone Name:	OTI8C7
Applications:	WB
Recommended Dilution:	WB 1:2000
Reactivity:	Human, Mouse, Rat
Host:	Mouse
Isotype:	IgG1
Clonality:	Monoclonal
Immunogen:	Human recombinant protein fragment corresponding to amino acids 97-190 of human RHOH(NP_004301) produced in E.coli.
Formulation:	PBS (pH 7.3) containing 1% BSA, 50% glycerol and 0.02% sodium azide.
Concentration:	0.5 mg/ml
Purification:	Purified from mouse ascites fluids or tissue culture supernatant by affinity chromatography (protein A/G)
Conjugation:	Biotin
Storage:	Store at -20°C as received.
Stability:	Stable for 12 months from date of receipt.
Predicted Protein Size:	21.1 kDa
Gene Name:	ras homolog family member H
Database Link:	NP_004301 Entrez Gene 74734 Mouse Entrez Gene 305341 Rat Entrez Gene 399 Human Q15669
Synonyms:	ARHH; TTF
Protein Families:	Transcription Factors
Protein Pathways:	Leukocyte transendothelial migration



[View online »](#)

Product images:

HEK293T cells were transfected with the pCMV6-ENTRY control (Left lane) or pCMV6-ENTRY RHOH ([RC204324], Right lane) cDNA for 48 hrs and lysed. Equivalent amounts of cell lysates (5 ug per lane) were separated by SDS-PAGE and immunoblotted with anti-RHOH (1:2000). Positive lysates [LY401372] (100ug) and [LC401372] (20ug) can be purchased separately from OriGene.