

Product datasheet for **TA810025S**

Stanniocalcin 1 (STC1) Mouse Monoclonal Antibody [Clone ID: OTI6D12]

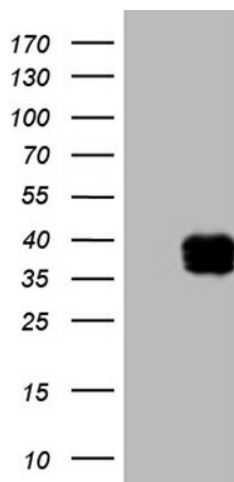
Product data:

| | |
|-------------------------|--|
| Product Type: | Primary Antibodies |
| Clone Name: | OTI6D12 |
| Applications: | WB |
| Recommended Dilution: | WB 1:500~2000 |
| Reactivity: | Human, Dog, Mouse, Rat |
| Host: | Mouse |
| Isotype: | IgG1 |
| Clonality: | Monoclonal |
| Immunogen: | Human recombinant protein fragment corresponding to amino acids 34-247 of human STC1(NP_003146) produced in E.coli. |
| Formulation: | PBS (pH 7.3) containing 1% BSA, 50% glycerol and 0.02% sodium azide. |
| Concentration: | 1 mg/ml |
| Purification: | Purified from mouse ascites fluids or tissue culture supernatant by affinity chromatography (protein A/G) |
| Conjugation: | Unconjugated |
| Storage: | Store at -20°C as received. |
| Stability: | Stable for 12 months from date of receipt. |
| Predicted Protein Size: | 25.9 kDa |
| Gene Name: | stanniocalcin 1 |
| Database Link: | NP_003146 Entrez Gene 20855 Mouse Entrez Gene 81801 Rat Entrez Gene 486112 Dog Entrez Gene 6781 Human P52823 |
| Synonyms: | STC |
| Protein Families: | Druggable Genome, Secreted Protein |

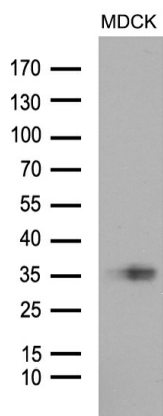


[View online »](#)

Product images:



HEK293T cells were transfected with the pCMV6-ENTRY control (Cat# [PS100001], Left lane) or pCMV6-ENTRY STC1 (Cat# [RC206573], Right lane) cDNA for 48 hrs and lysed. Equivalent amounts of cell lysates (5 ug per lane) were separated by SDS-PAGE and immunoblotted with anti-STC1 (Cat# [TA810025])(1:2000). Positive lysates [LY401098] (100ug) and [LC401098] (20ug) can be purchased separately from OriGene.



Western blot analysis of extracts (35ug) from MDCK cell line by using anti-STC1 monoclonal antibody. n (1:500)