

## Product datasheet for **TA810025AM**

### Stanniocalcin 1 (STC1) Mouse Monoclonal Antibody (Biotin conjugated) [Clone ID: OTI6D12]

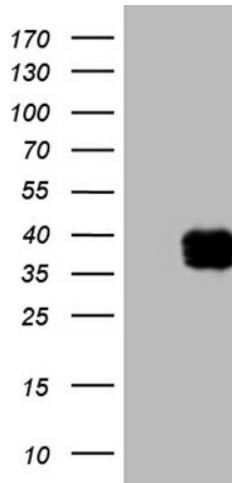
#### Product data:

Product Type:	Primary Antibodies
Clone Name:	OTI6D12
Applications:	WB
Recommended Dilution:	WB 1:500~2000
Reactivity:	Human, Dog, Mouse, Rat
Host:	Mouse
Isotype:	IgG1
Clonality:	Monoclonal
Immunogen:	Human recombinant protein fragment corresponding to amino acids 34-247 of human STC1(NP_003146) produced in E.coli.
Formulation:	PBS (pH 7.3) containing 1% BSA, 50% glycerol and 0.02% sodium azide.
Concentration:	0.5 mg/ml
Purification:	Purified from mouse ascites fluids or tissue culture supernatant by affinity chromatography (protein A/G)
Conjugation:	Biotin
Storage:	Store at -20°C as received.
Stability:	Stable for 12 months from date of receipt.
Predicted Protein Size:	25.9 kDa
Gene Name:	stanniocalcin 1
Database Link:	<a href="#">NP_003146</a> <a href="#">Entrez Gene 20855 Mouse</a> <a href="#">Entrez Gene 81801 Rat</a> <a href="#">Entrez Gene 486112 Dog</a> <a href="#">Entrez Gene 6781 Human</a> <a href="#">P52823</a>
Synonyms:	STC
Protein Families:	Druggable Genome, Secreted Protein

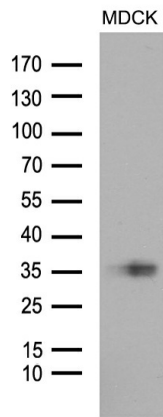


[View online »](#)

**Product images:**



HEK293T cells were transfected with the pCMV6-ENTRY control (Cat# [PS100001], Left lane) or pCMV6-ENTRY STC1 (Cat# [RC206573], Right lane) cDNA for 48 hrs and lysed. Equivalent amounts of cell lysates (5 ug per lane) were separated by SDS-PAGE and immunoblotted with anti-STC1 (Cat# [TA810025])(1:2000). Positive lysates [LY401098] (100ug) and [LC401098] (20ug) can be purchased separately from OriGene.



Western blot analysis of extracts (35ug) from MDCK cell line by using anti-STC1 monoclonal antibody. n (1:500)